



# Responses to Environmental and Societal Challenges for our Unstable Earth (RESCUE)

**Forward Look -**  
 an ESF-COST “*Frontier of Science*” initiative

(June 2009-Dec. 2010)

[www.esf.org/rescue](http://www.esf.org/rescue)



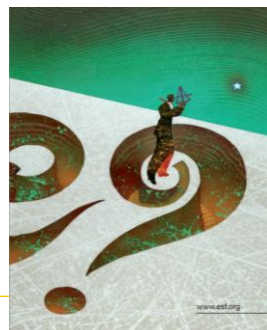
v. 2009-09-08



## General Forward Look Goals

- Forward Looks provide **medium to long-term authoritative visions** on science perspectives in broad areas of research bringing together ESF Member Organisations, other research institutions and the scientific community, in creative interaction.
- Forward Look reports and other outputs such as Science Policy Briefings assist **policy makers and researchers** in **setting priorities** and in defining and implementing **optimal research agendas**.

[www.esf.org](http://www.esf.org)



[www.esf.org](http://www.esf.org)

## Typical Forward Look Design

- **State-of-the-Art review**
  - Current state of research in the area and highlights of the major advances in the last years
- **Scientific challenges**
  - Impact of those advances on the research agenda
  - Indication of major knowledge gaps and potential 'hot topics'
  - Identification of European strength and weakness
- **Vision**
  - Presentation of a vision with major goals that could provide directions for research in the medium and long term time frame
  - Implementation plan (in terms of infrastructure, institutional innovation, human resources, governance)
- **Impact and Follow-up**
  - Key stakeholders likely to play a key role in the implementation
  - Targeted recommendations
  - Follow-up mechanism to ensure delivery and avoid risks

## Typical Forward Looks Format

- Activities include preparatory study/expert groups, high level overview papers, workshops and meetings
- Main event: high visibility conference
- Outputs: Policy Briefings, major reports, action plans
- Scientific Steering Committee: 8-12 p.
- Lead time: 12-18 months
- Average budget: 120-240 k€



## Foresight exercise - Characteristics

- Many shapes and sizes!
- Common aspects: experts, panels, project team, fixed budget and time, sponsor, reporting and recommendations
- Typical variations: methodological sophistication, degree of participation, budget and time available, time horizon, coverage, organisational configuration...
- Essential elements of foresight: Future-oriented; Participative; Evidence-based; Multidisciplinary; Aligning; Action-oriented