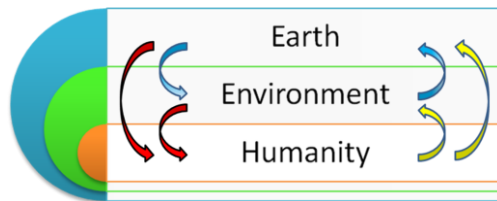


RESOLVE Alignment Workshop

16 June 2010; EC-JRC IES, Ispra (IT)

RESOLVE Working Group 'Requirements for Methods and Data'



www.esf.org/resolve

fl-resolve@esf.org

WG Objectives

Initial objectives

- ✓ Identify strengths and weaknesses of models and data analysis approaches used in global change research aiming at an integrated and global perspective on global change
- ✓ Assess the state of integration of the human dimension and in particular the “soft” aspects such as perceptions and beliefs, situated knowledge
- ✓ Make an inventory of data sets available for interdisciplinary research paying particular attention to availability and matching of scales
- ✓ Assess the need and possibilities for integration of disparate data holdings



Topics to be addressed....

..... How did we work

..... Preliminary results

..... Next steps



Key Concern

***Address the human
dimension!***



WG Methods and Data Activities and time schedule

Survey on knowledge gaps and major structural constraints for innovation (Nov 2009 – Feb 2010)

In depth analyses of knowledge gaps and structural constraints and how to overcome them (March – June 2010)

Activities and time schedule

Survey on knowledge gaps and major structural constraints for innovation to include a wider range of perspectives from the scientific and policy communities

- Short contributions from WG members on relevant topics related to WG objectives
- Questionnaire to respondents from science and policy
- Workshop → identify gaps where to invite short position papers, prepare interviews and discuss expert workshop (WG members March 2010)

Activities and time schedule, cont.

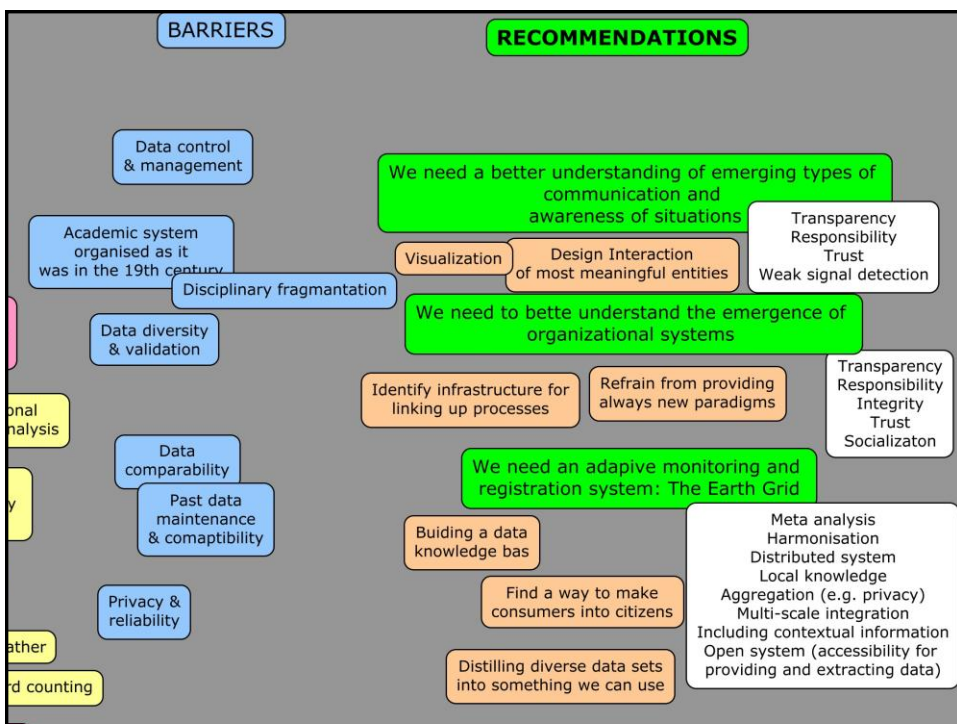
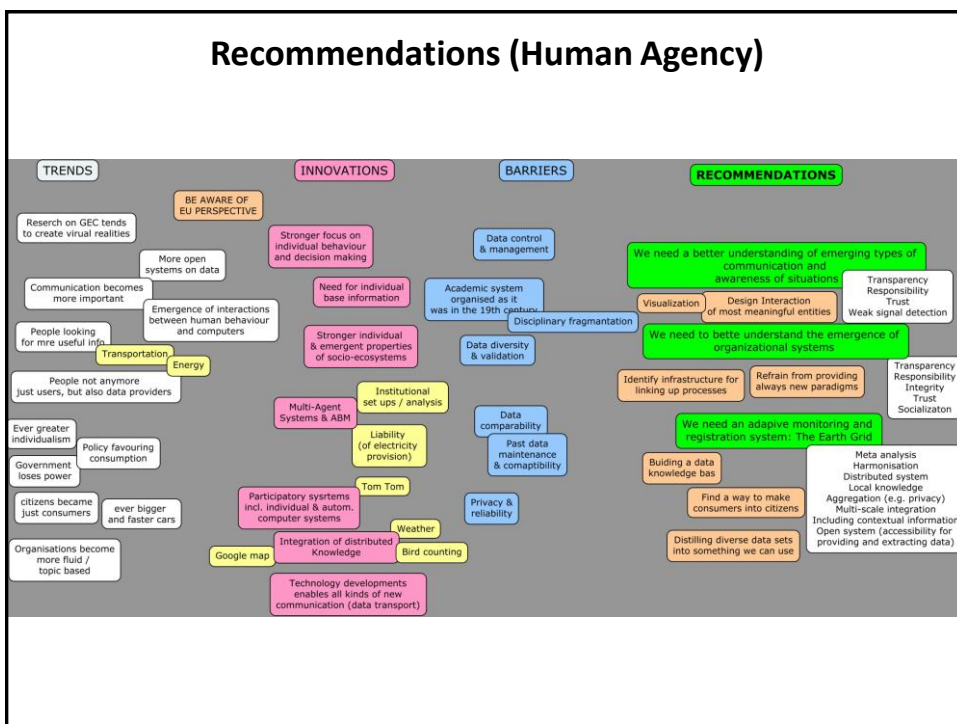
In depth analyses of knowledge gaps and structural constraints and how to overcome them

- Development of invited short synthesis notes on topical themes (WG members and further experts)
- Interviews with experts and representatives from funding agencies on structural constraints
- Moderated expert workshop on knowledge gaps, how to resolve them and identification of major steps how to proceed (WG members and further invited experts)

Guiding Questions (2nd phase)

- Which **characteristics** do global environmental challenges have that make them not easily amenable to policy solutions and how can innovation in data and methods support identification and implementation sustainable policy solutions?
- How to **manage system transitions** to integrated and sustainable resource governance and management regimes and at the same time respecting good governance principles? What data and methods are required to understand transition processes and support their management?
- What is the role of **human agency** (consumers, citizens, international organizations, governments etc.) in developing adaptive responses to global change in social-ecological systems? What are methods and data to analyse the role of individual behaviour and the societal structure and identify drivers and barriers for change?

Recommendations (Human Agency)



Recommendations (Characteristics)

- **Overcome lack of Social Engagement in GEC**
 - Strengthen mechanisms for Engagement/ Participatory Processes (creating an environment where consumers become citizens)
 - Make tools /toolkits available and usable for the public
- **Global (multi-level) Governance**
 - Support global and regional foresight studies
 - Research into robust decision making methods
 - Research into Institutional design for sustainable resource management (multi-scale, multi-sector) and use including capturing valuable data
- **Assessing Vulnerability**
 - Funding of Long term research on anticipating extraordinary (unexpected) events (knowledge concerning mapping).
 - Support Disaster Risk Mapping including differential social vulnerability

Recommendations (Transitions)

- Support long-term studies – change funding structure (data base infrastructure, action research programmes)
- Laboratories for integrated approaches
- Data, Information, Knowledge base as common pool resource – base for wide ranging comparative case study analyses
- Improve access to and comparability of large data sets
- Develop Tools/methods for monitoring change and embed them in societal context (evolutionary perspectives on change)

WG Next Steps

Synthesize insights from workshop and validate with interviews, position papers, online-survey

Identify possibilities for dissemination activities (in addition to what is foreseen by ESF already)

14/14

EUROPEAN SCIENCE FOUNDATION
SETTING SCIENCE AGENDAS FOR EUROPE

WG Comments & Suggestions

cost

RESCUE Template for WG inputs (2/4)

- ✓ Suggestions to other WGs

Joint activities for dissemination - communication

- ✓ WG remaining Timeline

How to synthesize material – how to develop joint products with other WGs?

