

All European Academies ALLEA

Founded in 1994

Federation of 53 Academies of Sciences and
Humanities

40 European countries

Jüri Engelbrecht, Former president of the Estonian
Academy, professor at the Technical University of
Tallinn



Among the members are

- **National Academy of the Lincei, L'Accademia Nazionale dei Lincei**, fondata nel 1603, è la più antica accademia scientifica del mondo; annoverò tra i suoi primi Soci **Galileo Galilei**
- **Pontifical Academy of Sciences**
Pontificia Academia Scientiarum

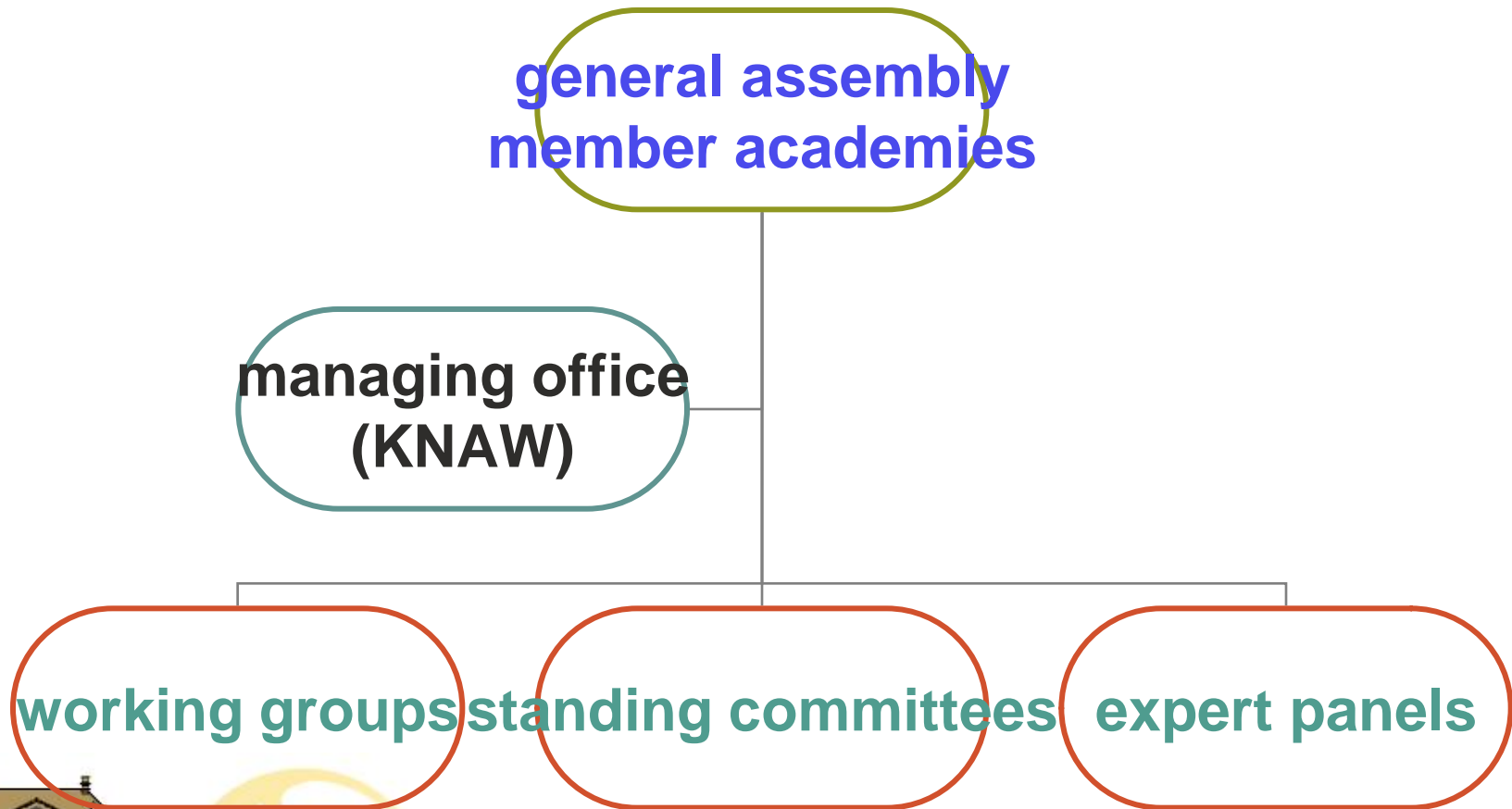


ALLEA goals

- promote the exchange of information and experience between Academies
- offer European science and society advice from its Member Academies, and
- strives for excellence in science and scholarship, high ethical standards and independence from political, commercial and ideological interests



organisation



Evaluating for Science ALLEA working group

Netherlands, France, UK (Royal Society), Germany, Sweden, Poland, Spain and Turkey, **start summer 2008**



Proposed activities

- Produce a best practice overview of evaluation methods and existing protocols, including for example the Dutch experiences with the Standard Evaluation Protocol (SEP) and the British Research Assessment Exercise (RAE)
- Based upon common elements in these protocols we will propose a minimum set of standard guidelines which will be supported by all Academies. This could act as a kind of an ALLEA evaluation code



- We will not set up a register of experts

How will we work?

- early summer: kick off meeting with members of the working group
- start inventory among all ALLEA members, ask for relevant documents and other information. This will include ideas to reduce the evaluation workload for scientist and to prevent referee fatigue
- fall: analyse the data and search for common elements. Based upon these we will write a draft for a European Evaluation Protocol
- early 2009: discuss the draft protocol at a meeting of the working group and after revision it will be sent out to ALLEA members.



Before summer 2009 we produce a document with a proposal for a European protocol

Relation with other European evaluation initiatives

- ESF member organisation fora:
 - on Evaluation of funding schemes and research programmes
 - on Peer Review
 - on Research Careers
- RTD evaluation network (6th framework)
- other initiatives (see inventory)

