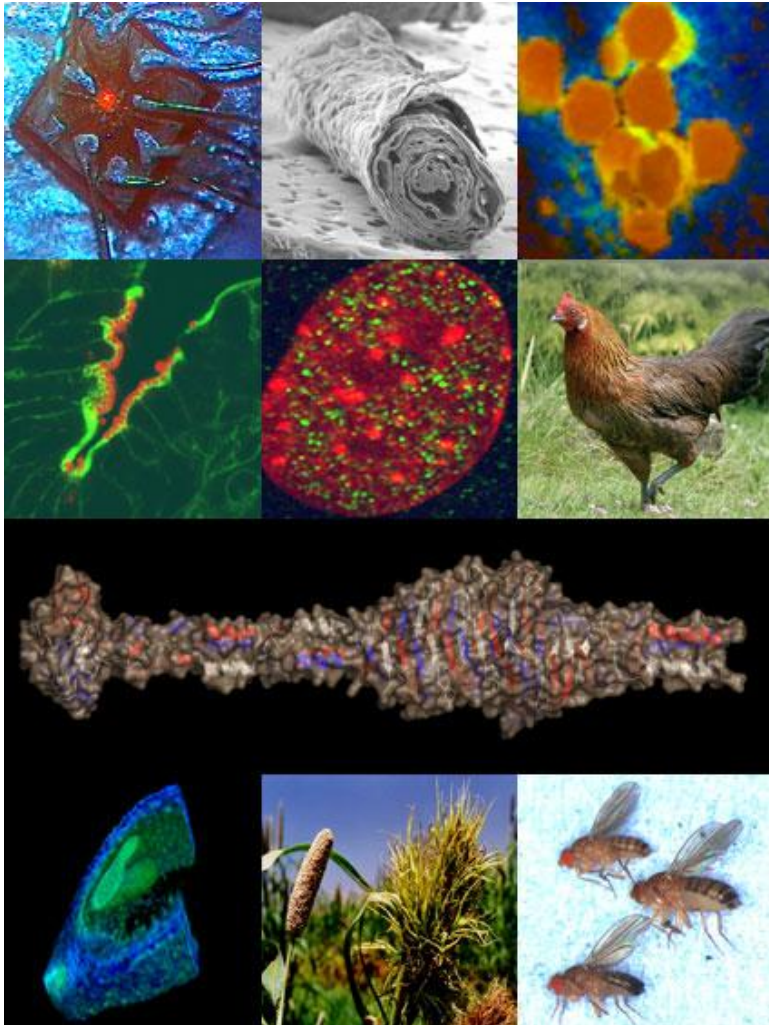


BBSRC Approaches to Evaluation of Research

Mari Williams
Head, Evaluation & Policy Unit
BBSRC

October 2007

What is the BBSRC



MISSION

- Fund first-class bioscience research
- Train bioscientists
- Support knowledge transfer and economic impact
- Engage with public

STAKEHOLDERS

- PUBLIC: dialogue and consultation
- SCIENTIFIC COMMUNITY
- INDUSTRY: agriculture, food, chemical, health, pharmaceutical
- GOVERNMENT: e.g. DEFRA, FSA

Why?
Quality of Life and UK plc

BBSRC Bioscience Funding

- Budget **£372M** (2006-07)
- Employs **2700** staff at **7** sponsored institutes
- Funds research at **83** UK Universities
 - 25% funding goes to **3** universities
 - 50% funding goes to **9** universities
 - 75% funding goes to **20** universities

“Mixed economy” of BBSRC funding

Universities 2/3

- basic research
- curiosity-driven
- shorter-term funding
- research training

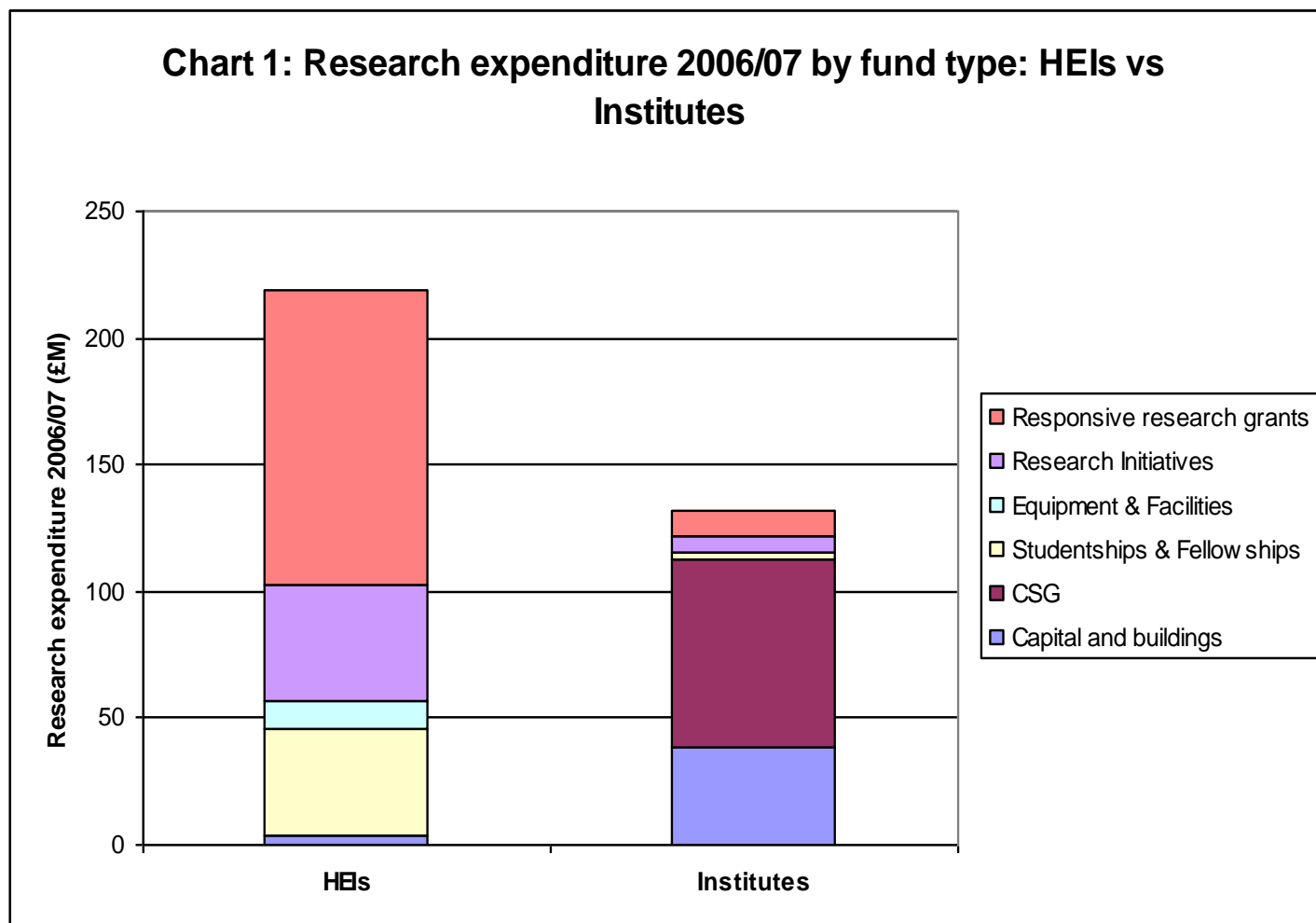


Institutes 1/3

- strategic research
- mission-oriented
- longer-term funding
- specialist facilities



BBSRC Research Funding 2006-07

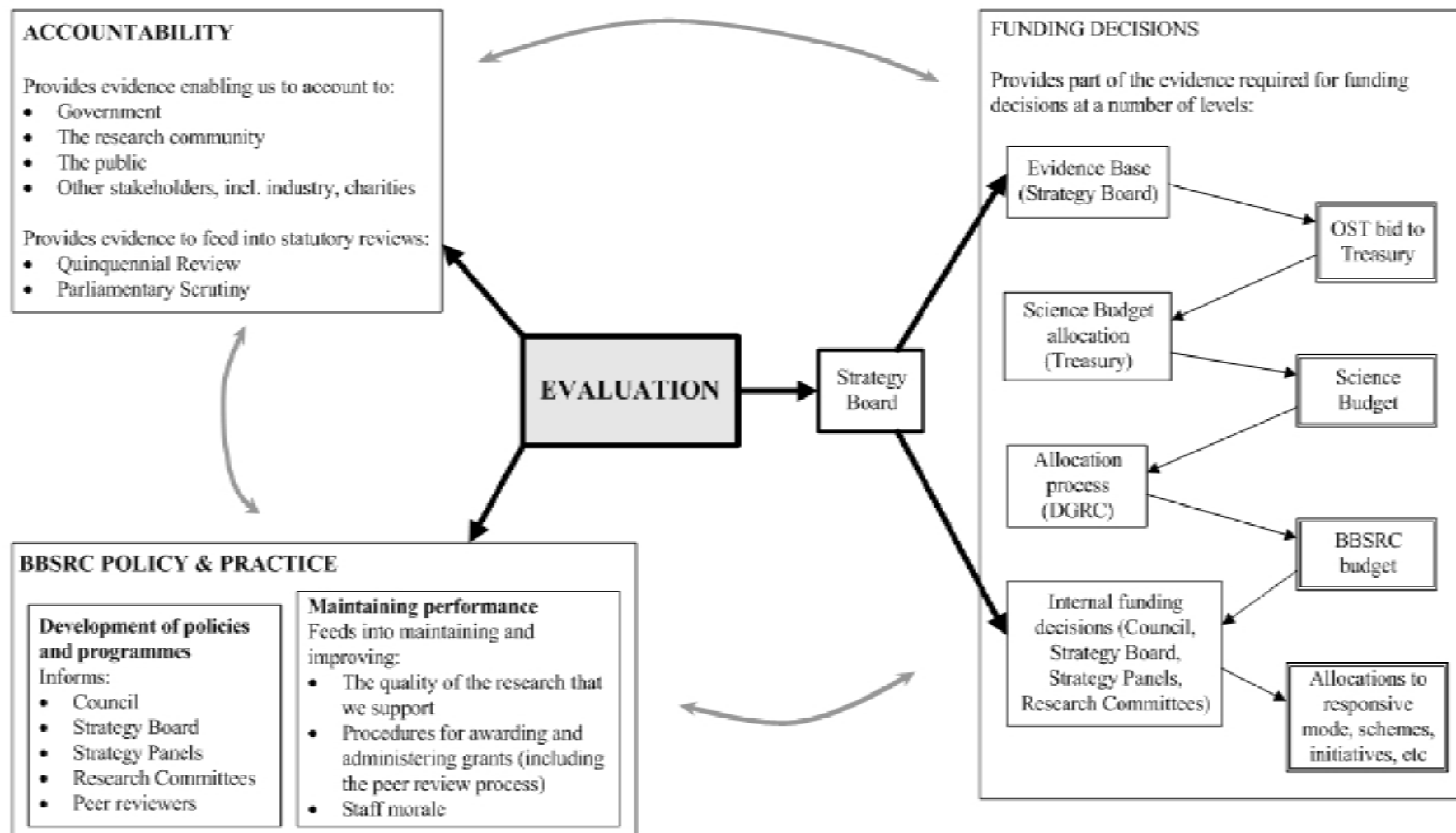


BBSRC Research Evaluation Strategy

(http://www.bbsrc.ac.uk/about/pub/reports/eval_strat_01_02_06.html)

- Provides framework
- Sets out levels of evaluation
- Ensures formal consideration of outcomes
- Includes programme of evaluations

Why Evaluate?



Evaluation Framework

- Identifies achievements
- Informs future strategy
- Evidence for funding bids
- Accountability for use of public funds
- Input to Government Performance Management System

Evaluation Levels

Project	<ul style="list-style-type: none">• Evaluation of final reports from grants
Programme/ Scheme	<ul style="list-style-type: none">• Rolling programme of responsive mode portfolio evaluations• Evaluation of Research Initiatives 2-3 years after the grants have ended• Periodic evaluation of funding schemes
Institution	<ul style="list-style-type: none">• Institute Assessment Exercise, conducted every 4 or 5 years at the BBSRC-sponsored Research Institutes

Project Evaluation

- Individual grants peer reviewed by two experts and graded by Committee
- Individual grades contribute to “track record”
- Aggregated scores published in annual BBSRC indicators

Final Report Grades

- A:** Very high class work that has produced results of considerable scientific importance in a cost effective way and met all or almost all of the agreed or related key objectives;
- B:** Work that has added significantly to knowledge in the field and met the majority of its agreed or related key objectives;
- C:** Work that has fallen short of the contribution to knowledge or cost effectiveness expected from the original proposal even though it may have met some or all of its agreed or related key objectives;
- D:** Work that has not added significantly to knowledge in the field and/or has failed to address the agreed or related objectives.

Responsive Mode Portfolio

- 7 committee areas covering BBSRC remit (Agri-Food; Animal Sciences; Biochemistry & Cell Biology; Biomolecular Sciences; Genes & Developmental Biology; Engineering & Systems Biology; Plant and Microbial Sciences)
- On-going research
- Evaluation of sampled grants funded since mid-1990s

Research Initiatives

- Directed programmes in strategically significant areas (eg Ageing; TSEs; Bioinformatics)
- Time bound and fixed budget
- Evaluation of all grants funded through the initiative

Responsive Mode

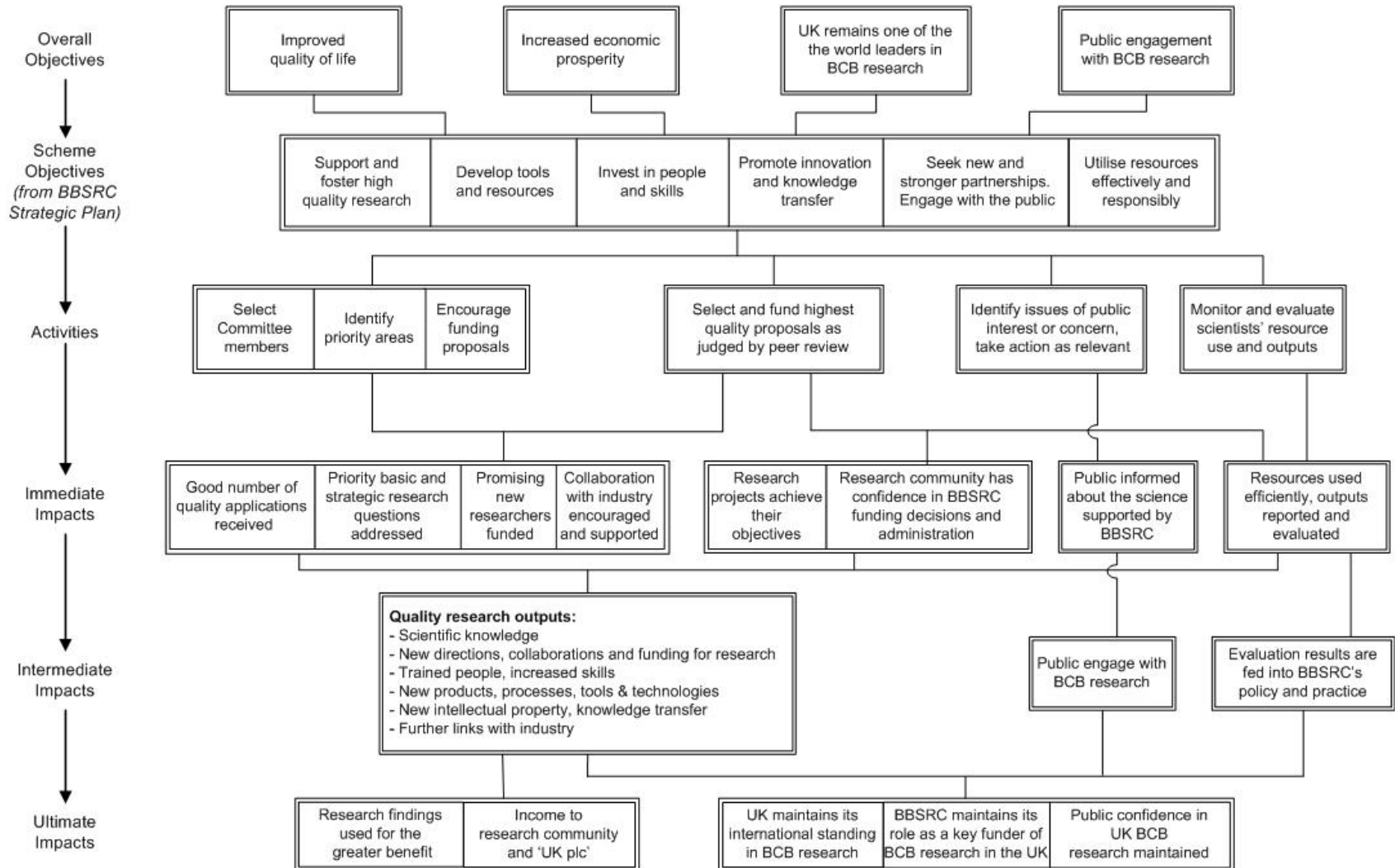
- Logic chart
- Questionnaires to sample of award holders
- Desk research
 - Grant details
 - Contextual information
 - Limited citation data
- Expert peer panel

Research Initiatives

- Logic chart
- Questionnaires to all award holders
- Desk research
 - Programme details
 - Grant details
 - Contextual information
 - Limited citation data
- Expert peer panel

Evaluation Logic Chart

Logic Chart for Biochemistry and Cell Biology Committee Responsive Mode Funding



Evaluation coverage

- Research quality
- Research relevance, to BBSRC mission and programme objectives
- Outputs, outcomes, achievements
- Economic impact
- Success stories
- Process issues

Main approaches

- Internal mechanisms, methodology similar to programme evaluation
 - New Investigators (desk research)
 - Modular Training for Industry (Logic chart; questionnaires; panel)
- Use of consultants
 - Other BBSRC Knowledge Transfer schemes

New Investigators Evaluation

Identify

- Reason for scheme: to support new researchers
- Scheme mechanism: additional help through peer review process

Analyse

- Data from all NIs
- Compared with all responsive mode

- **Evaluation objectives**
 - Is scheme achieving its aims?
 - Impact in terms of support and wider
 - Highlights/major achievements
 - How to build on success/address issues

MTI: How?

- Evaluation methodology
 - In-house
 - Logic chart
 - Questionnaire surveys:
 - Previous award holders
 - New awards holders
 - Panel members

Evaluation outcomes: general

- Identifies achievements
- Informs future strategy
- Provides evidence base for funding bids
- Facilitates accountability for use of public funds
- Feeds into Government Performance Management System
- Sheds light on internal procedures

Evaluation and change

- Move towards funding longer, larger grants
- Reconsideration of Knowledge Transfer schemes
- Reconsideration of committee structures and priority areas
- Refinement of NI scheme

Evaluation Reports

- **Genes & Developmental Biology Responsive Mode Portfolio (July 2007)**
- **Biochemistry & Cell Biology Responsive Mode Portfolio (June 2007)**
- **Animal Sciences Responsive Mode Portfolio (June 2006)**
- **Modular Training for Industry Programme (November 2006)**
- **Business Plan Competition Review (October 2006)**
- **Outcomes from BBSRC Supported Knowledge Transfer Partnerships (February 2006)**
- **Institute Assessment Exercise (February 2006), with links to reports on seven BBSRC-sponsored institutes**
- **Review of the BBSRC New Investigator Scheme and Support for Early-Career Researchers (April 2007)**

All available from BBSRC website: <http://www.ac.uk>