

# The Common Peer Reviewer Database: presentation of the project plan and discussion with the Forum

**Member Organisation Forum on Peer Review**

*8-9 February 2011, Brussels*

**Farzam Ranjbaran (ESF)**

“European college of reviewers”

our working name is: **RevEu**

- This will be a unique and much needed resource
- It will complement the Peer Review Guide
  - Guide (common reference) + RevEu (common pool of resources) → Main ingredients needed for making real impact on PR and Evaluation

## Rational and Vision

- A. Creation of an International assembly of peer reviewers as a formally established and “legally registered” entity managed by the ESF
- B. Structure and mandate being defined/implemented with the aims of: *attracting, selecting, hosting and utilizing* a significant number of international experts.
- C. This will not only be an extremely useful asset supporting the European research funding, performing and evaluating organisations but will also contribute to the bigger picture of peer review and Evaluation internationally



## Main Features

- ✓ Be a recognized cohort or assembly of experts
- ✓ Be credible and appealing – attract the best
- ✓ Embed strong QA and classification according to profile, scientific standing and membership history
- ✓ Be managed centrally while having a certain degree of self-organization
- ✓ Governance by a dedicated steering/governing body
- ✓ Terms of membership at least 3 years
- ✓ Details of usage and membership being defined

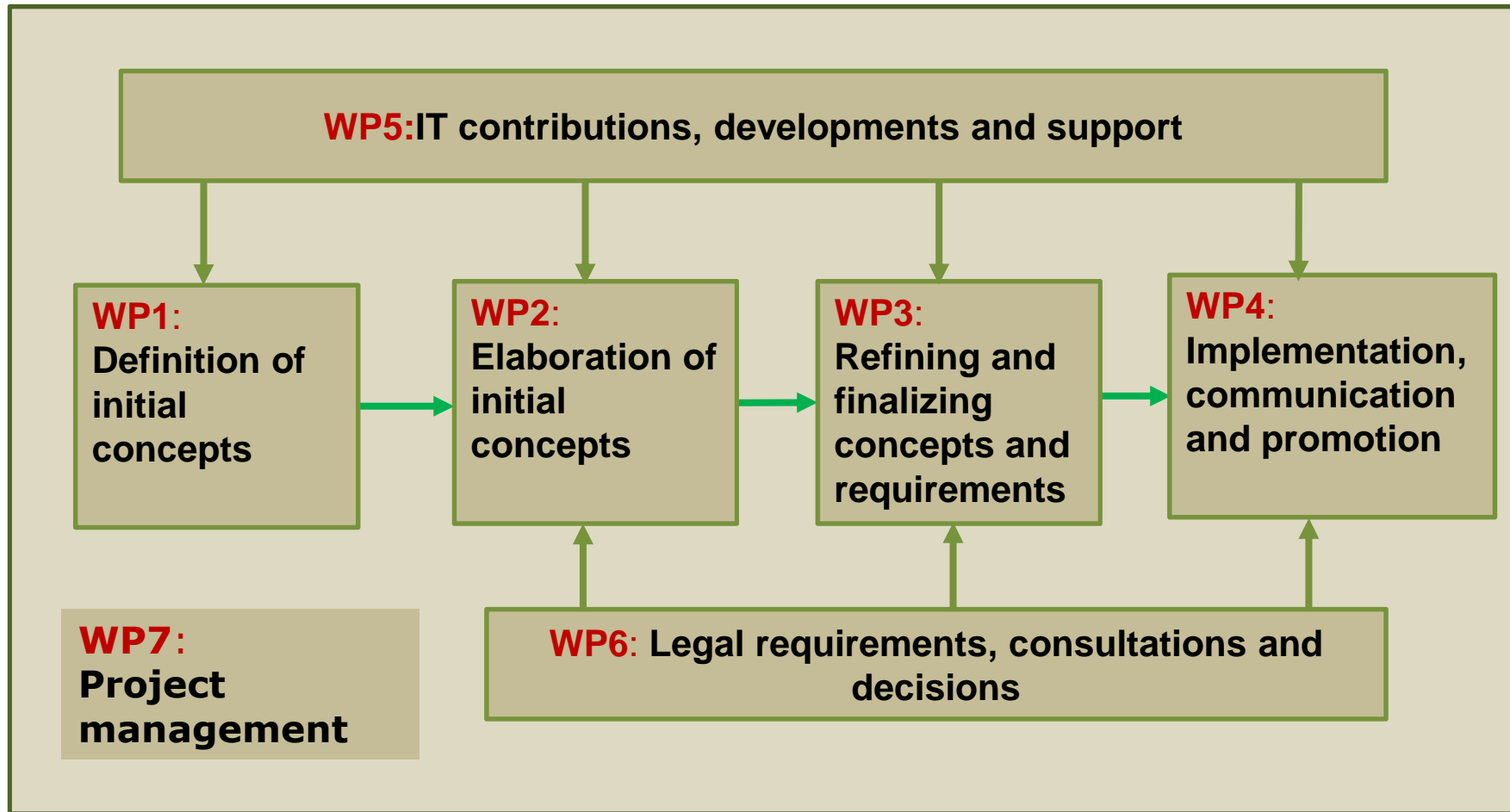


## Potential Benefits

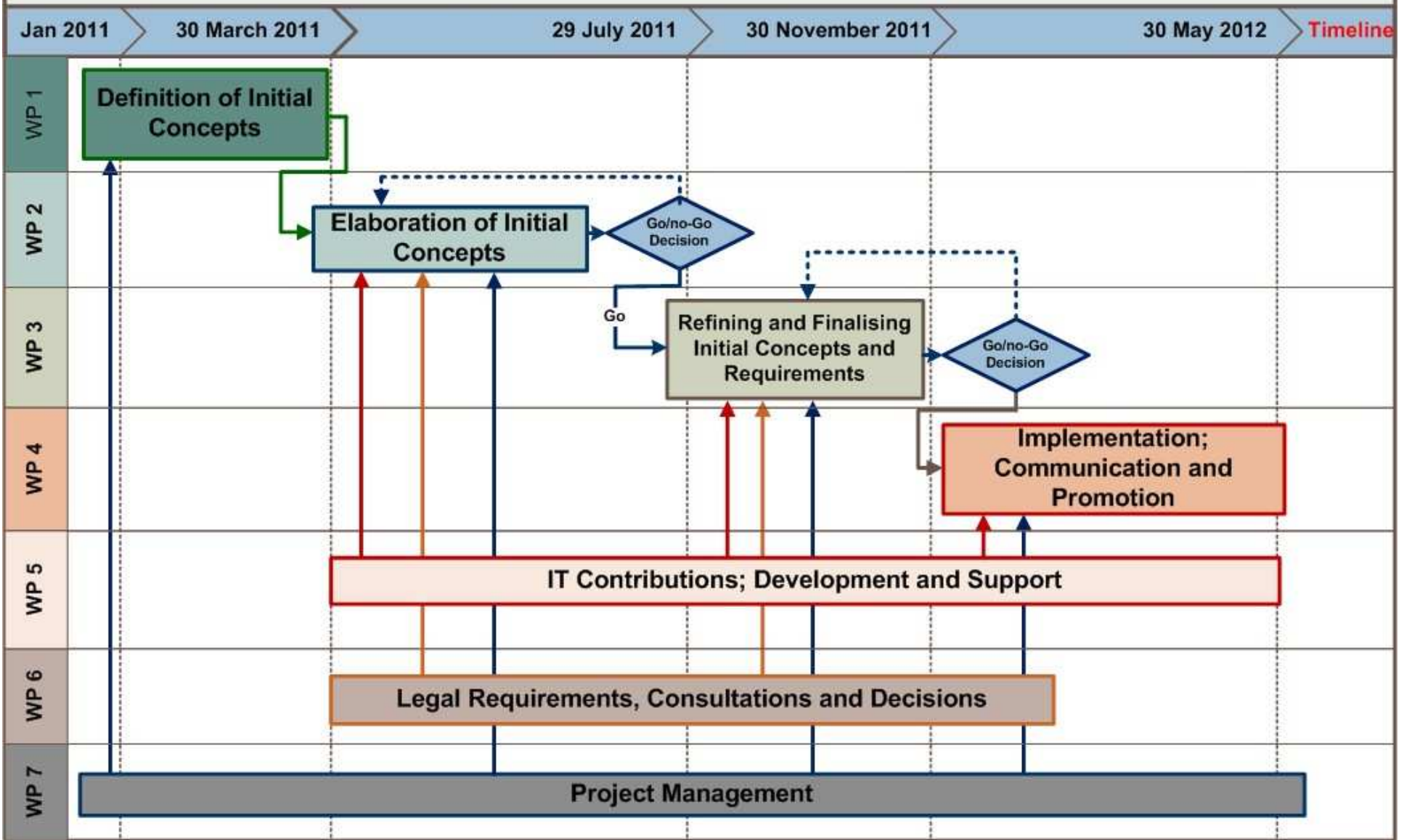
1. Facilitate delivery of common, consistent, high-quality, Peer Review and Evaluation exercises
2. Attract the best and assure quality of content
3. Allow easy delivery/exchange of reviewers among partner organisations and others
4. Possible Role in influencing Peer Review Practices in a general policy/agenda (e.g., role of incentives, usage of *bibliometrics, MICT* )
5. Possible role for Accreditation
6. Possible role for Training



# Work-Package Relationships



**Overall Project Plan for the establishment of the Common European Peer Reviewer Database**



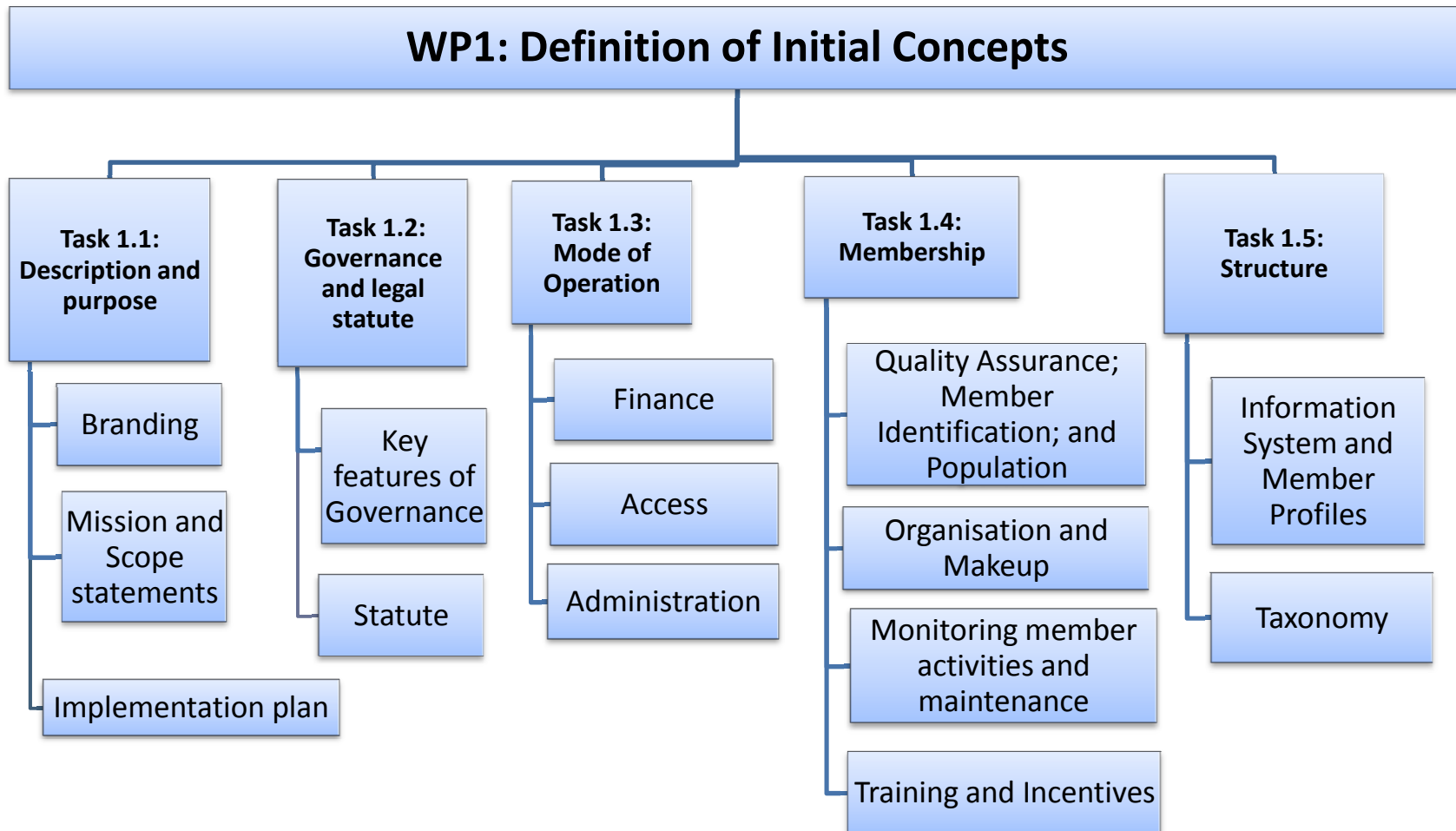
## WP1: Definition of initial concepts

The main objectives of the WP are:

- Decide/confirm an official name for RevEu
- Define a preliminary scheme for the development and operation of RevEu
- Further examine and *underline* the need and rationale for such a resource at a European level
- Set out a project *implementation plan* including timeline, estimated costs, and a list of key players and contributors
- Define working groups to be assigned to various tasks and activities in subsequent WPs



## Some of the Tasks currently identified for WP1

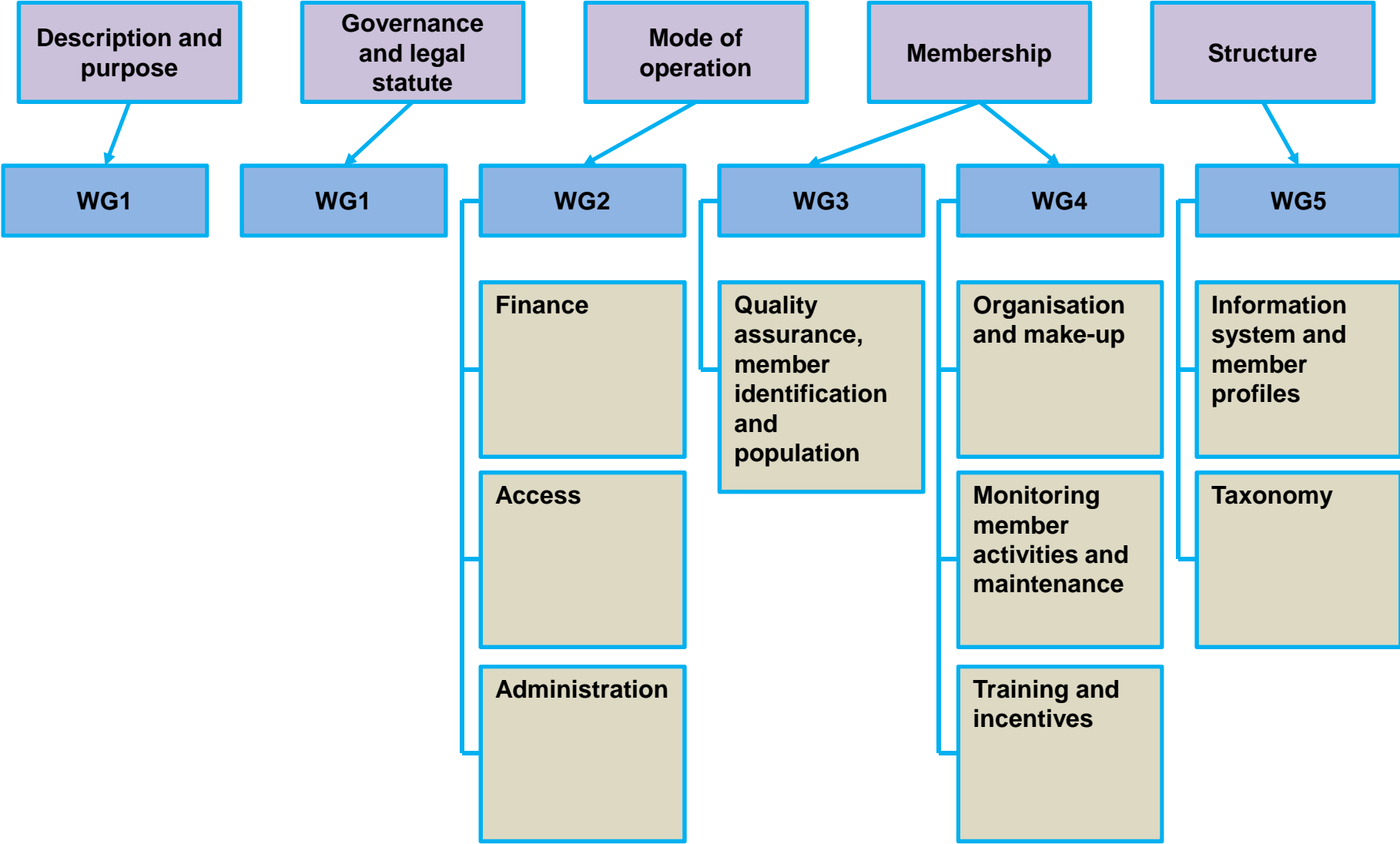


## WP2: Definition of initial concepts

The main objectives of WP2:

- Bring concepts and notions developed in WP1 to higher levels of maturity and elaboration
- Assign activities to the Working Groups
- Integrate input from stakeholders and key actors/players
- Assess competing scenarios and concepts and if necessary consolidate
- Consult with National organisations which have used a *college* of reviewers
- Elaborate a business model (financial and costing)
- Finalise the *implementation plan*
- Consolidate activity reports of WPs and Prepare a WP report to this Forum

# Outline of Work Package 2



## WP3: Refining and finalizing concepts and requirements

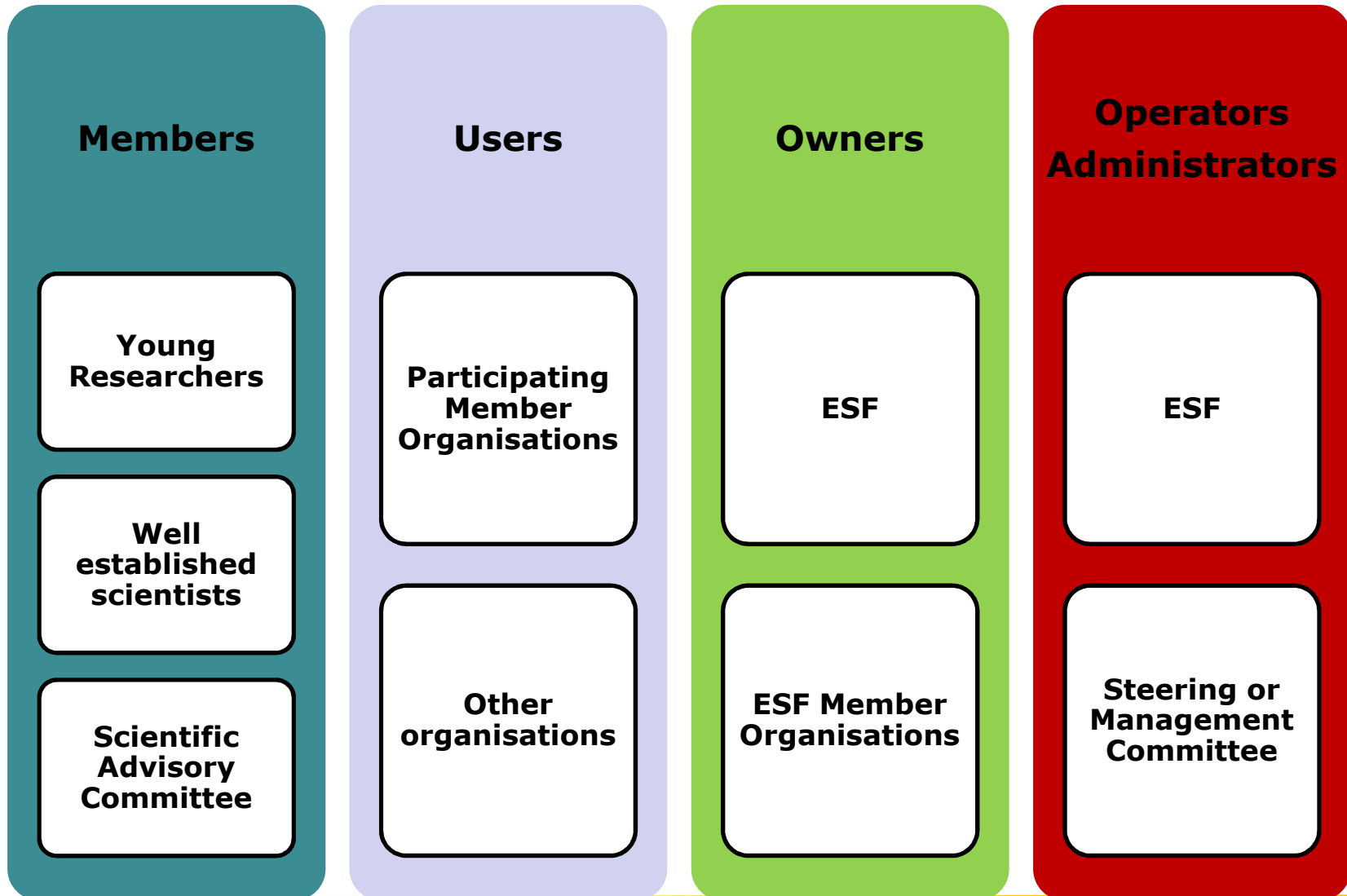
The main objectives of WP3:

- Finalise concepts and notions developed in WP1 and WP2
- Finalise implementation plan including detailed operational and usage costs
- Estimates on the initial size of the population
- Legal issues cleared up
- Governance and Statute
- Promotional plan
- IMS: requirements and specifications,
- Classifications and profiling systems
- Preparation for the Go/No-Go Decision

# Main items for discussion

- **Structure and Governance**
- **Membership and Quality Assurance**
- **Access, Maintenance and Operation**
- **Information Management including Research Classification Systems**

➤ **Structure and Governance**



## ➤ Membership and Quality Assurance

### ➤ Membership

- a. Selection by the **scientists** and by the **owners** under the overall guidance of the scientific advisory committee
- b. Broad spectrum of profiles (from young to well established and world leaders)
- c. International, Inclusive
- d. Planned growth in relation to demand
- e. Initial members extremely important
- f. Private sector and commercial databases (ISI WoS and Elsevier)!!

## ➤ Membership and Quality Assurance

### ➤ Quality Assurance

- a. Clearly stated and agreed criteria and means of profiling
- b. Research Classification
- c. Age, gender, academic standing, research performance, publication, past experiences
- d. Accumulated contribution and performance
- e. Feedback and Evaluation
- f. Training and mentoring



## ➤ Access Maintenance and Operation

- **Subscription fee plus pay per use**
- **Direct User Access (centrally monitored)**
  - a. Authorised organisations can tap directly into the pool and select their reviewers
  - b. Usage and availability is managed centrally
  - c. Usage fees are determined based on clear business model and paid per usage
- **Indirect User Access (centrally coordinated)**
  - a. All organisations must go through the central operating or administrating body
  - b. Usage and availability is managed centrally

➤ **Information Management including  
Research Classification Systems**

➤ **IMS: EuroCRIS, CERIF**

➤ **Research Classification Systems**

- a. Inter-operability
- b. Multi-level description versus keyword clustering
- c. MICT considerations