

Historical (Environmental) GIS

The Physical Geography Layout of the European History

Francisco J. Tapiador

University of Castilla-La Mancha, UCLM
Toledo, Spain

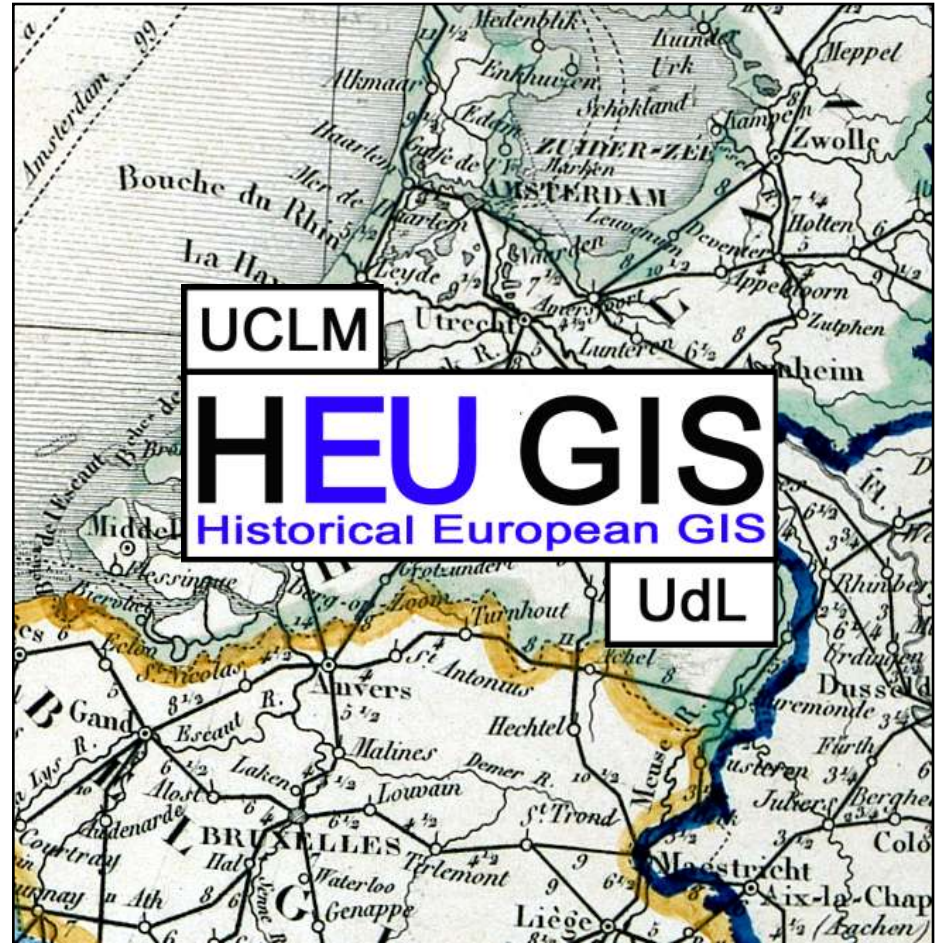
Jordi Martí-Henneberg

University of Lleida, UdL
Lleida, Spain

UdL + UCLM

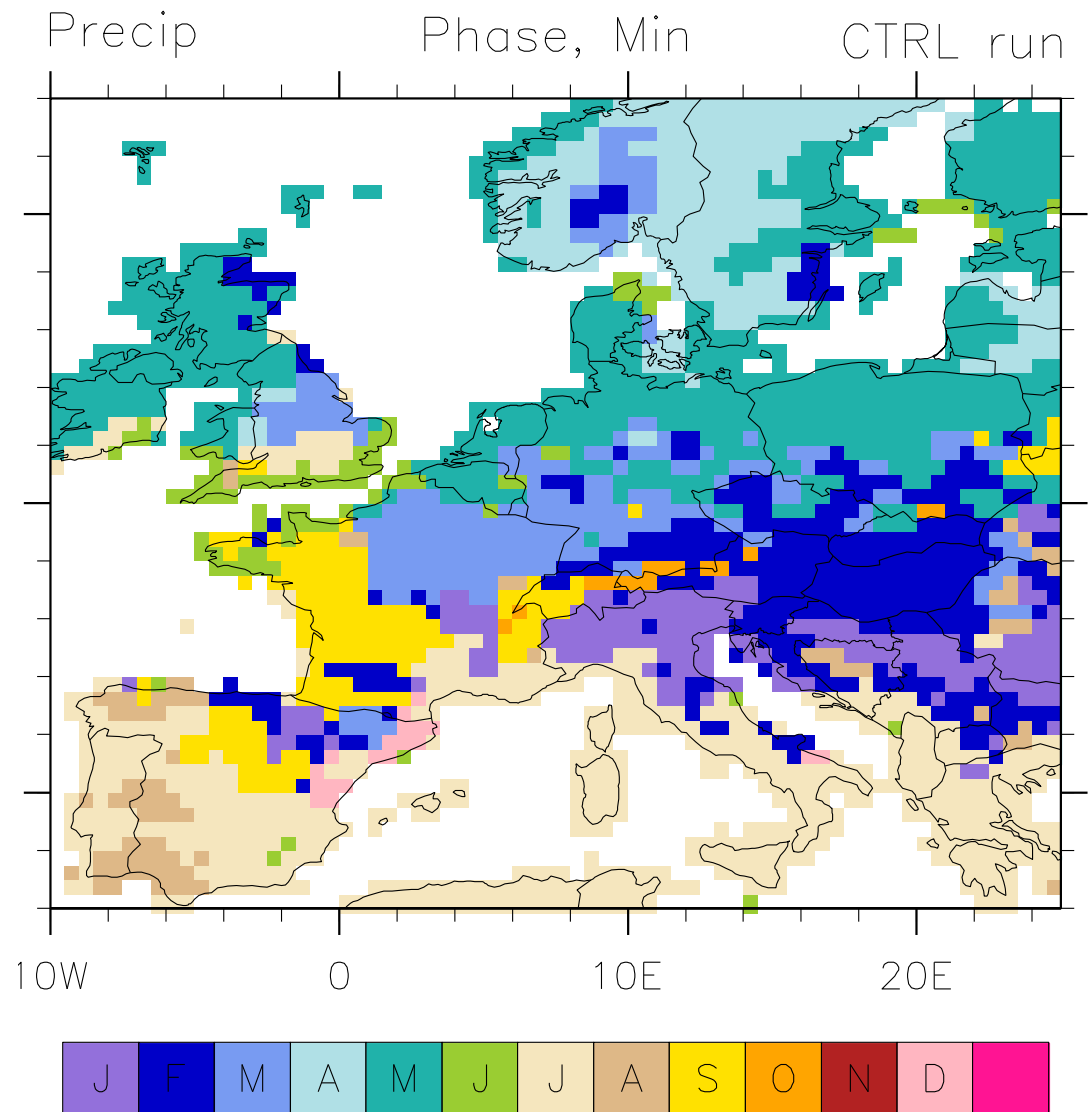
(Martí-Henneberg & Tapiador)

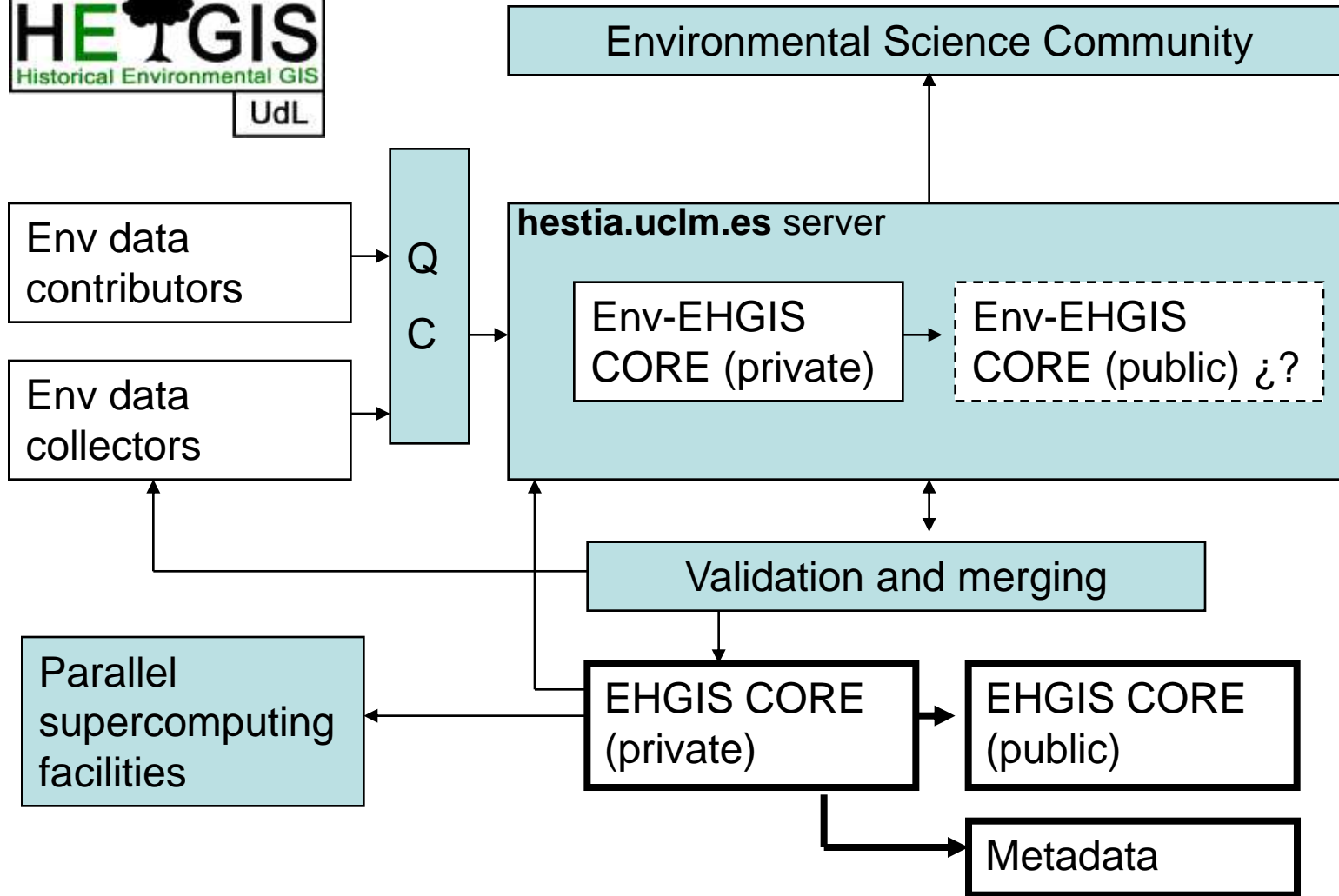
- Funding from 2001
- European-wide scale
- Software+Data+Analyses





- Daily data
- 25km resolution
- P, T, w, ... (21 vars)
- 1950-2000 done
- 1850-1950 in progress





How is data generated?

- Regional climate models nested on GCM
- Physical modelling: not statistically-based
- Postgres and PostGIS storage
- Variety of formats

Needs

- Some money for running the model
- Researchers interested in the results (users)
- Users requirements

Funding and Resources

- UdL+UCLM: national projects 2001-2010
- Private foundations

- Human resources: PhD students, postdocs, support staff

Visions for an European hGIS initiative

- Components:
 - Infrastructure (a centralized place)
 - Software (a common free software)
 - Data (censuses, hcal cartography, etc.)
 - Information (processed data)
 - Dissemination (web servers)
 - Users (ourselves and other historians)

Visions for an European hGIS initiative

- Philosophy:
 - From scratch or taking advantage of existing initiatives?
 - UdL+UCLM HEUGIS
 - Integrate national GIS into the HEUGIS
 - Links with World history (historical GIS of the USA, China, etc.)
- Strategic portfolio of funders
 - Massive FP7 project?
 - Other EU funds
 - Approach private, transnational EU companies using the ESF umbrella