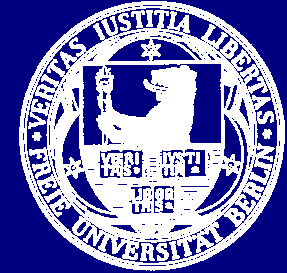


Dynamics of excess electrons from femtoseconds to minutes at ice-metal interfaces



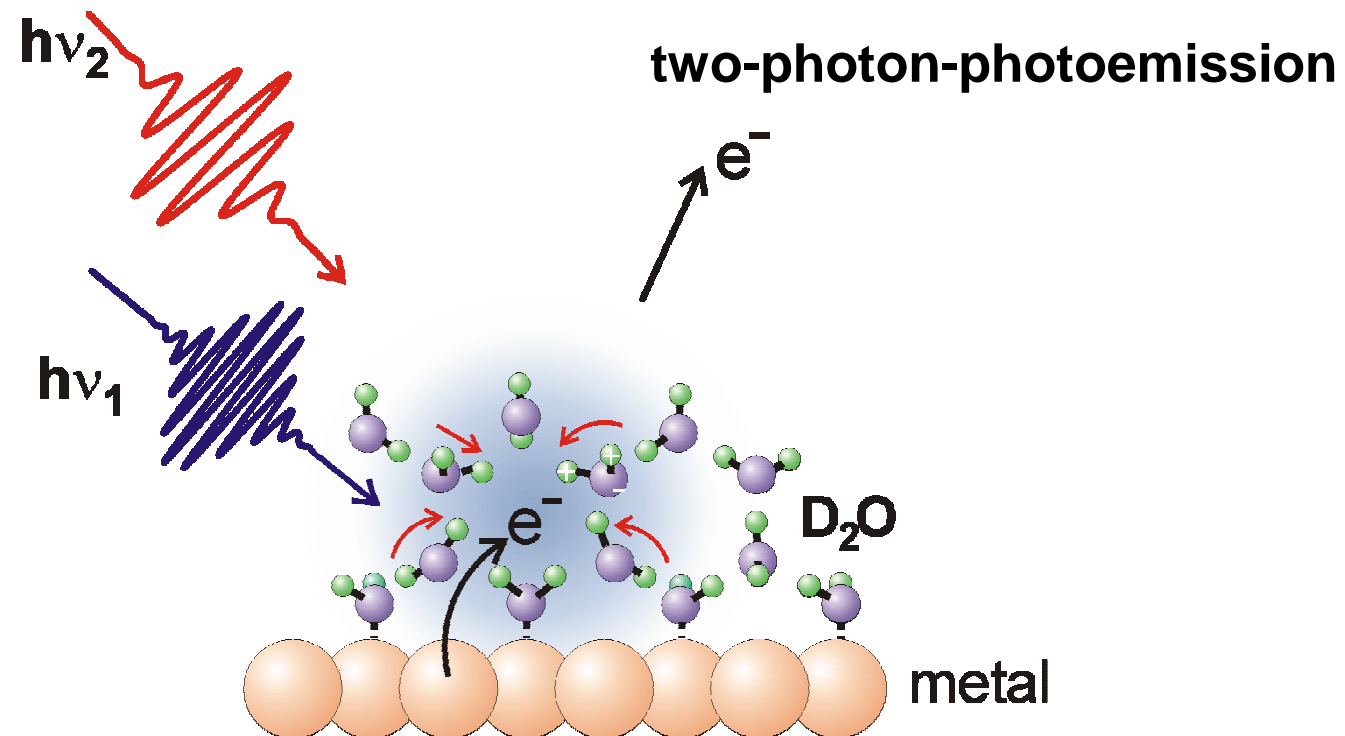
U. Bovensiepen¹, C. Gahl², J. Stähler¹, M. Bockstedte³, M. Meyer¹, X.-Y. Zhu⁴, A. Rubio³, M. Wolf¹

¹Freie Universität Berlin, Fachbereich Physik, Arnimallee 14, 14195 Berlin, Germany;

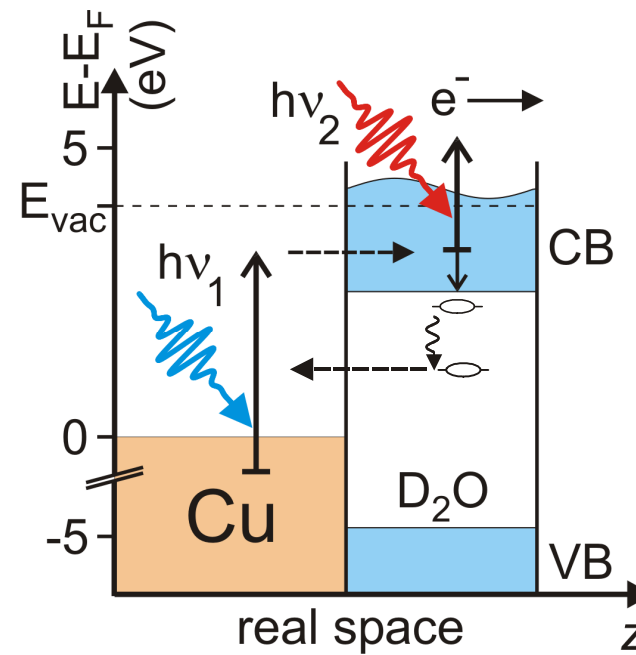
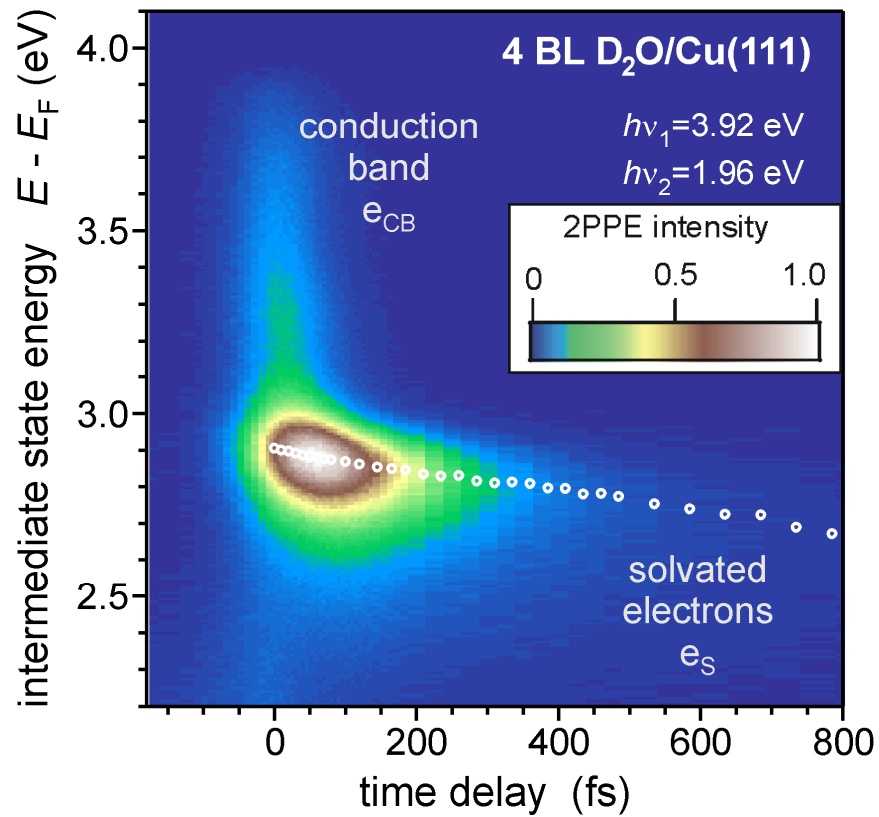
²Max-Born-Institut für Nichtlineare Optik und Kurzzeitspektroskopie, Max-Born-Str. 2a, 12489 Berlin, Germany;

³ETSF, Departamento Físico de Materiales, Universidad del País Vasco, 20018 San Sebastián, Spain;

⁴Department of Chemistry, University of Minnesota, Minneapolis, MN 55455, USA;



Multilayers of LD amorphous ice $D_2O/Cu(111)$



Electrons dynamics of crystalline ice on metals

