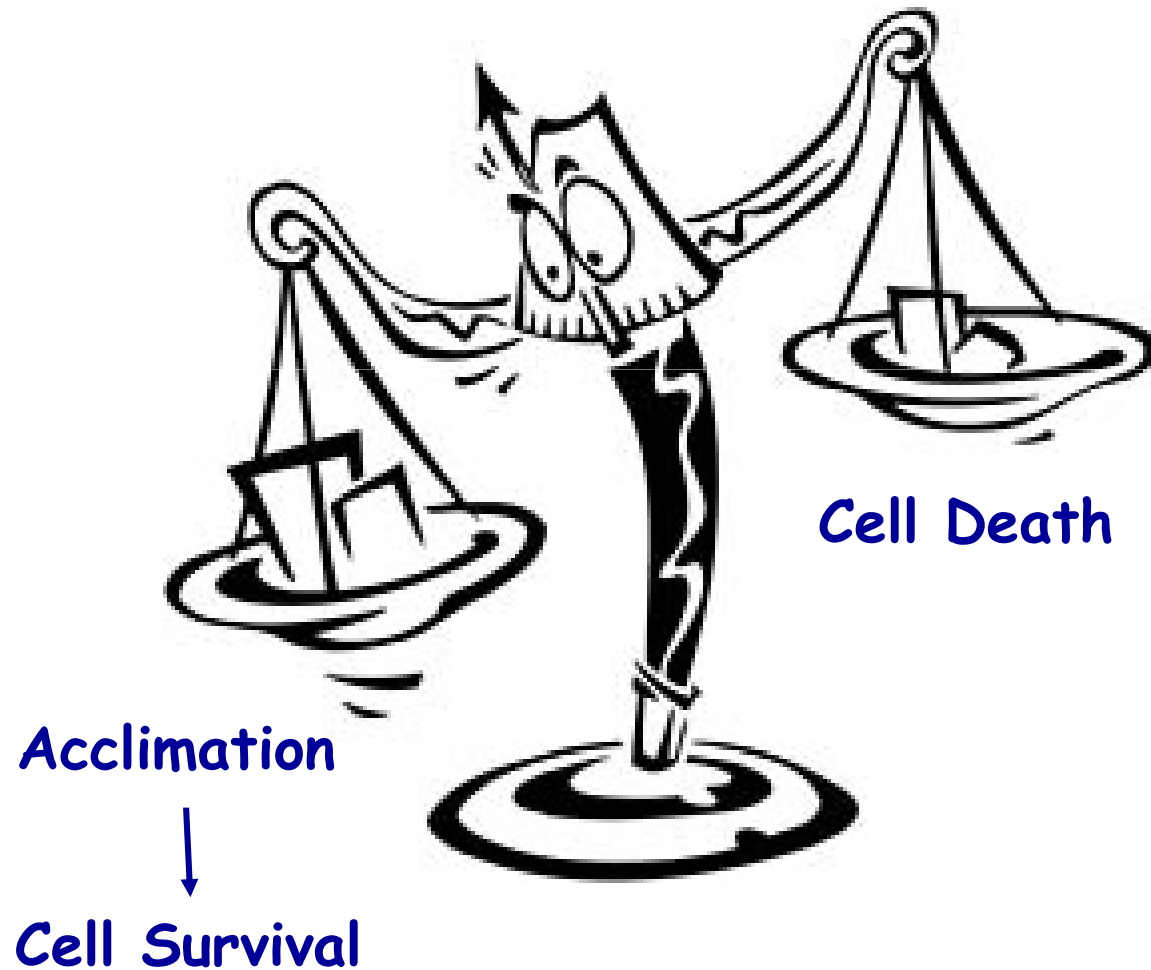
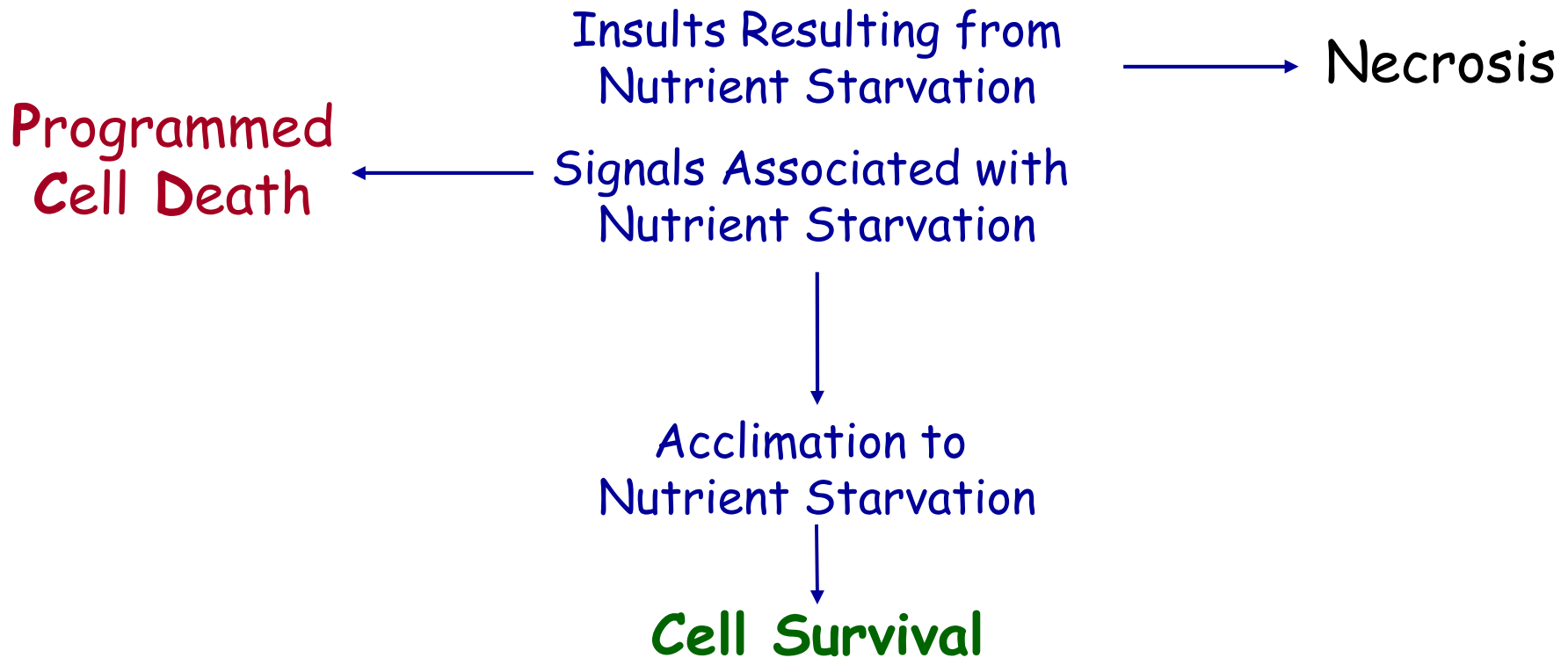


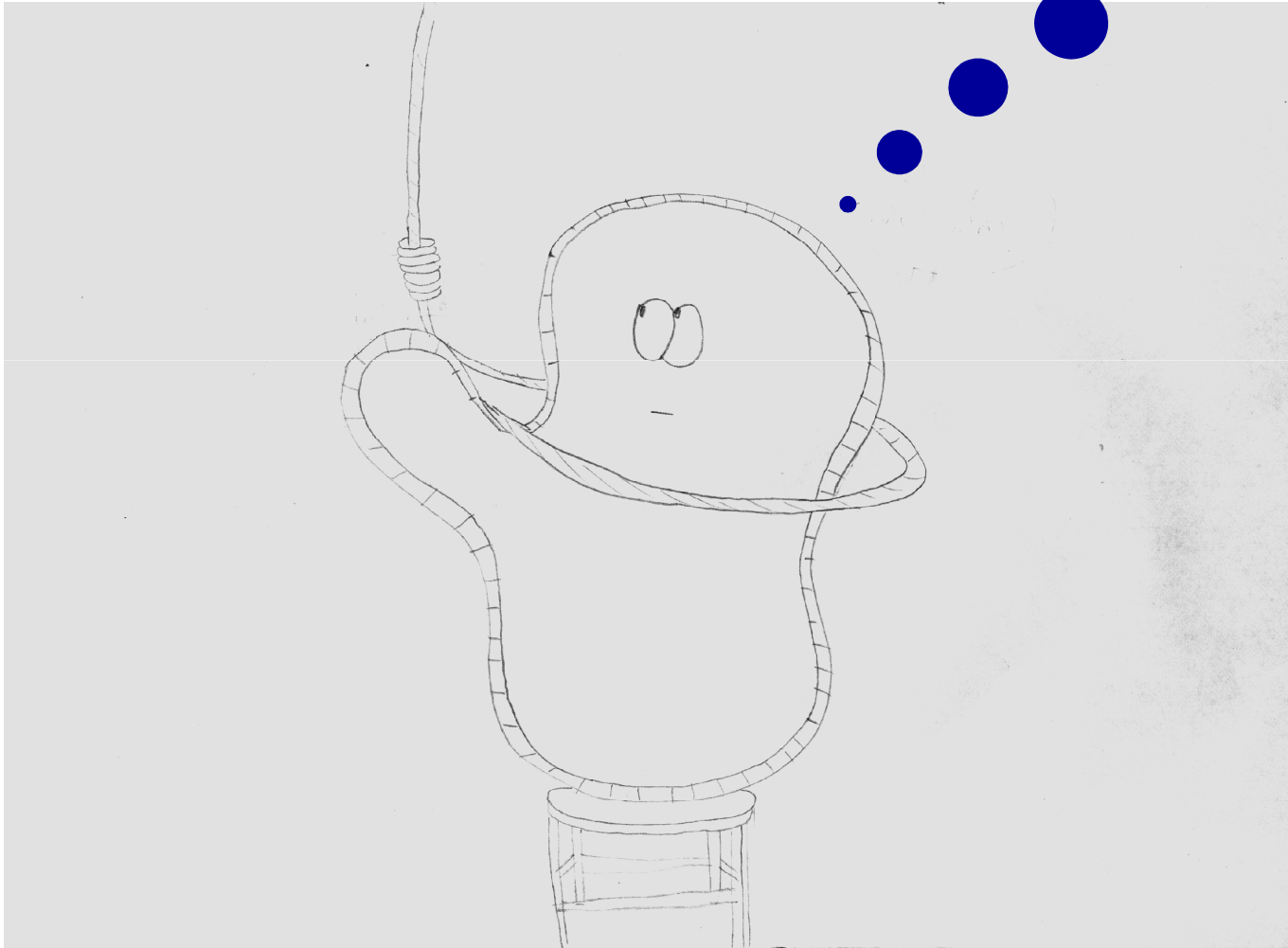
# Modulation of Cell Fate during Starvation: Lessons from Nitrogen Starved *S. elongatus*



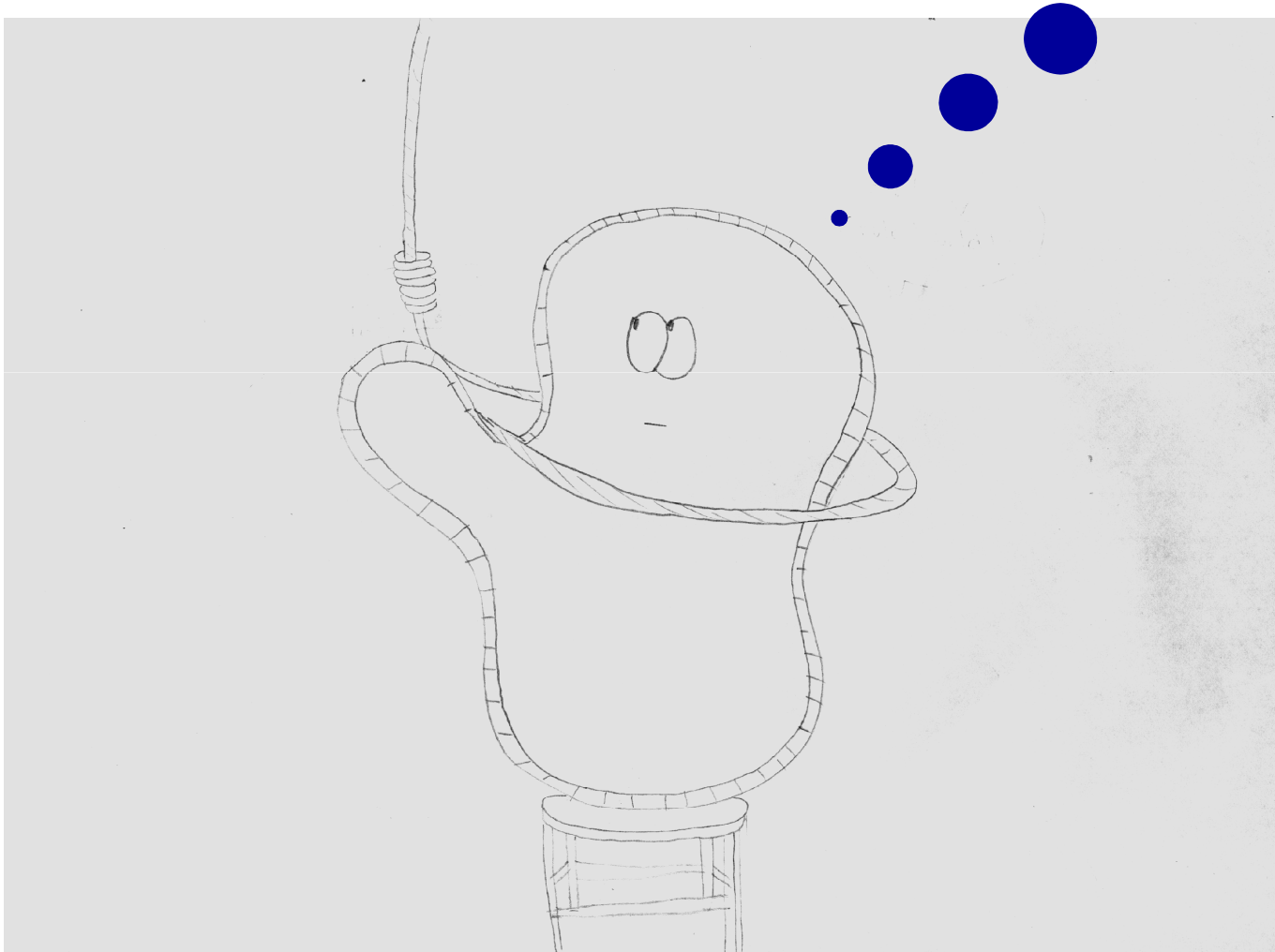
# Cellular Processes Affecting Cell Survival under Starvation - Working Hypothesis



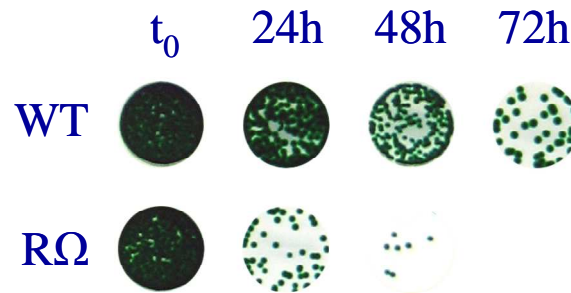
# Programmed Cell Death in a Unicellular Organism ?



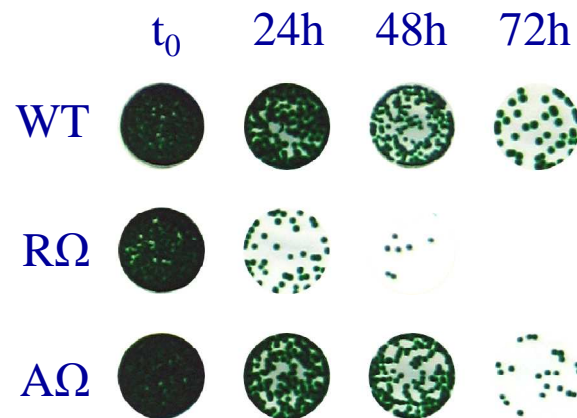
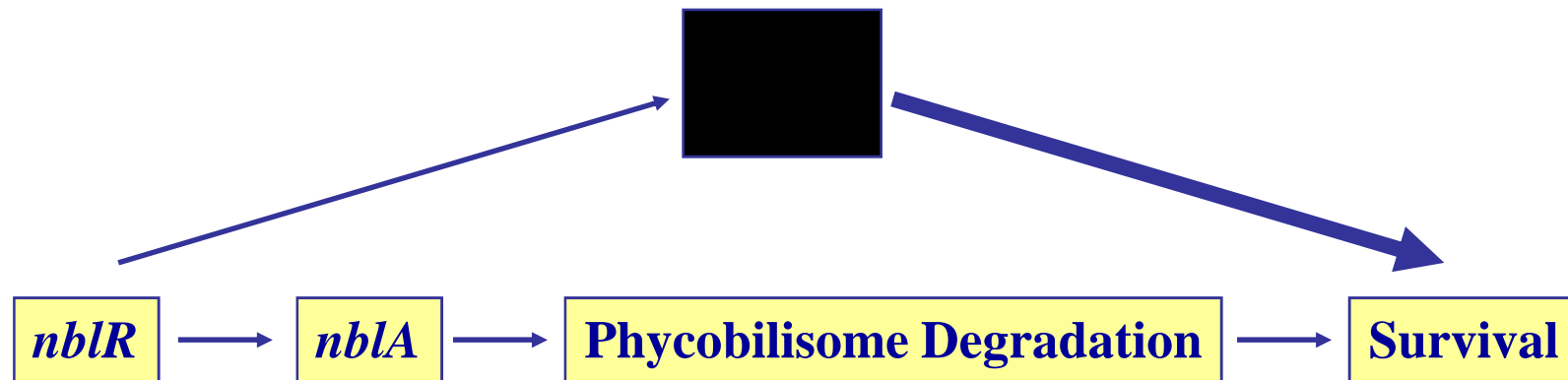
Considering the fact that bacteria exhibit communal behavior, the population as a whole may benefit from the sacrifice of individual cells



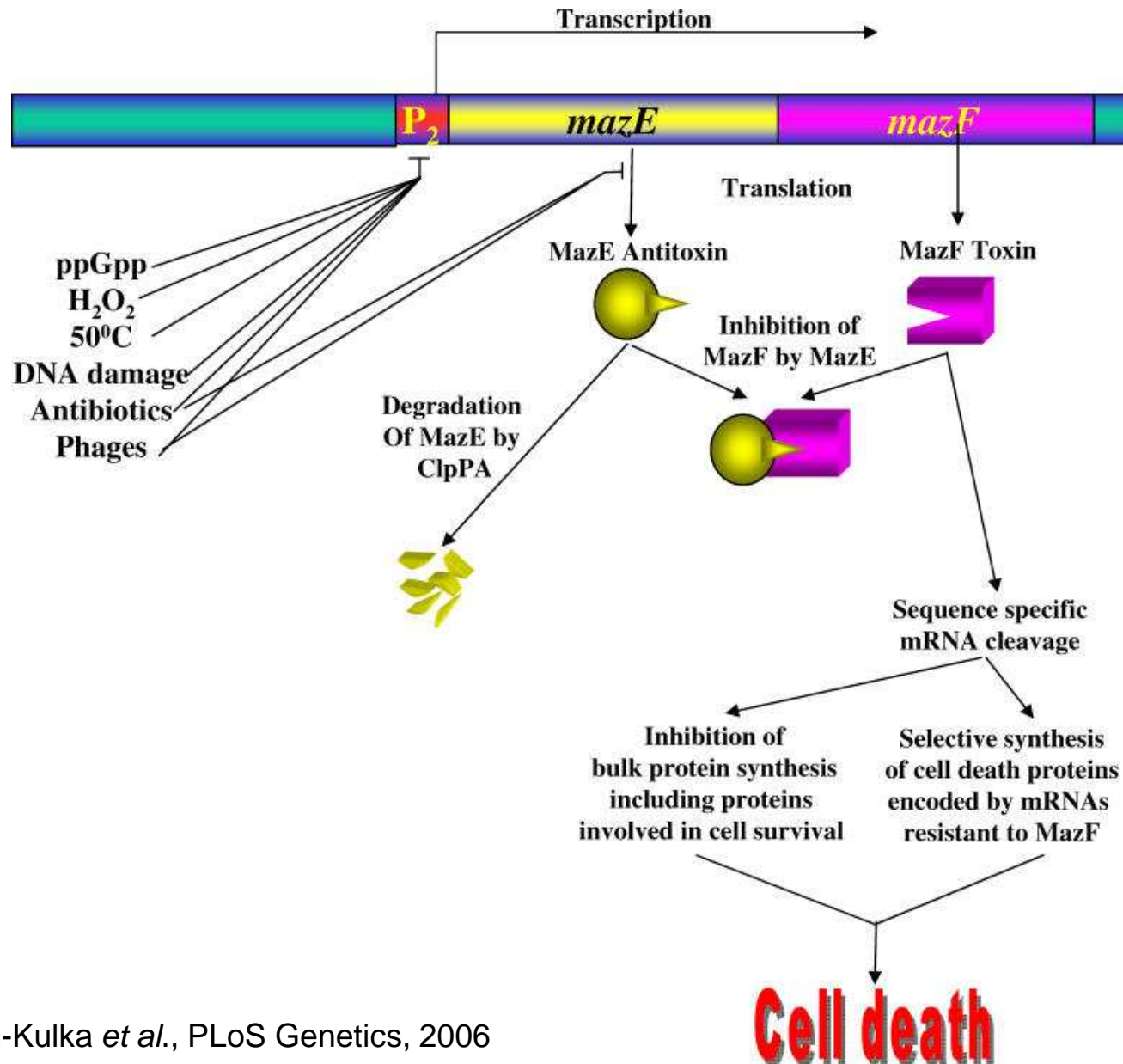
# A Mutant in the Response Regulator Homolog NblR Dies Rapidly during Starvation



# NblR Modulates Cell Fate during Starvation



# A Schematic Representation of *E. coli* *mazEF*-Mediated Cell Death



# Model for the Role of *chpAIK* (MazEF) and *chpBIK* (RelBE) Toxin-Antitoxin Operons in Translation Attenuation

