



Linköping University

RESEARCH CONFERENCES

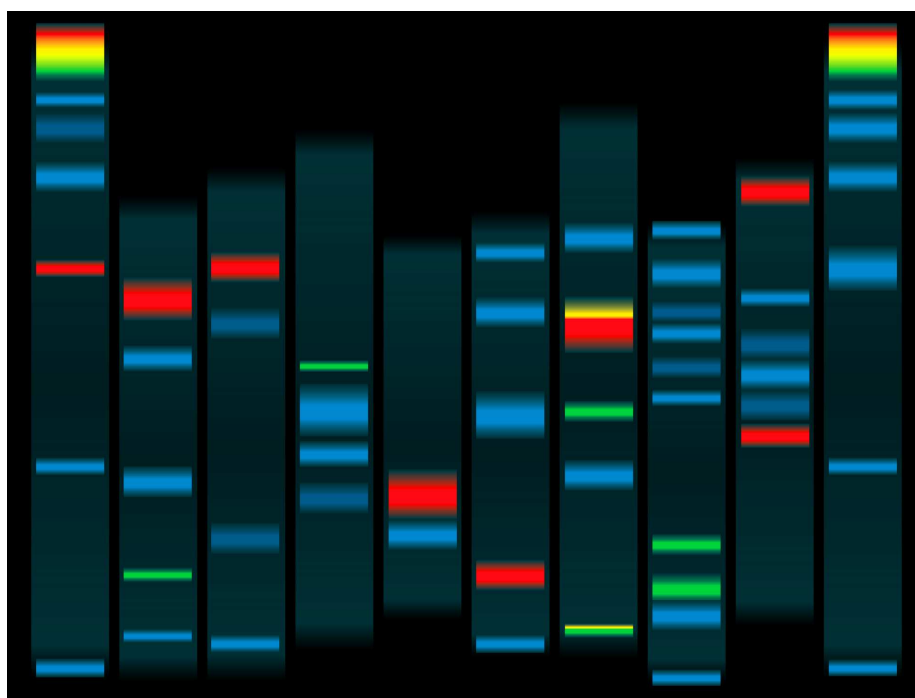
ESF-LiU Conference

Philosophy for Science in Use

Scandic Linköping Väst • Sweden
28 September - 2 October 2009

Chair: **Matthias Kaiser**, National Committee for Research Ethics in
Science and Technology, NO
Co-Chair: **Nancy Cartwright**, London School of Economics, UK
ESF Rapporteur: **Ilie Parvu**, Universitatea din Bucuresti, RO

www.esf.org/conferences/09272



© www.dreamstime.com

Final Programme

Mon 28 September

Late afternoon /
early evening

18.00

Registration at the ESF-RC desk

Nancy Cartwright

London School of Economics, UK

*Evidence, causal models and evidence-based policies –
new insights*

19.00

Welcome Drink

20.00

Supper

Tues 29 September

09.00-09.30

Conference Opening

Matthias Kaiser

Introduction

ESF Rapporteur: Ilie Parvu, Universitatea din Bucuresti, RO

ESF Presentation

09.30-10.30

Invited Speaker

Affiliation

Lecture

10.30-11.00

Coffee break

11.00-12.00

Matthias Kaiser

National Committee for Research Ethics in Science and Technology,
NO

Evidence for precaution

12.00-12.30

Discussion

12.30-14.00

Lunch

14.00-15.00

Julian Reiss

Erasmus University, NL

Causation for use

15.00-15.30

Coffee break

15.30-16.30

Jeroen van der Sluijs

Utrecht University, NL

Knowledge quality assessment: tools for reflexive science

16.30-17.00

Discussion

19.00

Dinner

Wed 30 September

09.00-09.30

Reflection Session I

09.30-10.30

Eleonora Montuschi

London School of Economics, UK

Evidence and Objectivity

10.30-11.00	Coffee break
11.00-12.00	POSTER SESSION
12.00-12.30	<i>DISCUSSION</i>
12.30-14.00	Lunch
14.00	Half-day excursion
19.00	Dinner

Thurs 01 October

09.00-09.30	<i>Reflection Session II (Forward Look)</i>
09.30-10.30	Speaker to be confirmed <i>Causal models and the mapping of uncertainties</i>
10.30-11.00	Coffee break
11.00-12.00	Felix Reed-Tsochas Saïd Business School, University of Oxford, UK <i>Complexity management for policy</i>
12.00-12.30	<i>DISCUSSION</i>
12.30-14.00	Lunch
14.00-15.00	Philip Kitcher Columbia University, US Well ordered science – the challenges for philosophy of science
15.00-15.30	Coffee break
15.30-16.30	Felix Thiele Europäische Akademie / University Duisburg-Essen, DE <i>Ethics and scientific policy consulting</i>
16.30-17.00	<i>DISCUSSION</i>
19.00	Get-together & Conference Dinner

Fri 02 October

09.00-09.30	<i>Reflection Session III</i>
09.30-10.30	Thomas Potthast Eberhard-Karls Universität, Tübingen, DE <i>Hybrid judgements: integrating scientific and ethical evidence</i>
10.30-11.00	Coffee break
11.00-12.00	Matti Sintonen Helsinki University, FI <i>Understanding, explaining and predicting</i>
12.00-12.30	<i>DISCUSSION</i>
12.30-14.00	Lunch
14.00	Departure

With support from

