



RESEARCH CONFERENCES

ESF-EMBO Symposium

Cell Polarity and Membrane Traffic

Hotel Eden Roc, Sant Feliu de Guixols (Costa Brava) • Spain
23 -28 May 2009

Chair: **Anne Spang**, Biozentrum University of Basel, CH
Co-Chair: **Ian G. Macara**, University of Virginia, US

ESF Rapporteur: **Pilar Pérez**, CSIC, ES
www.esf.org/conferences/09288

With support from

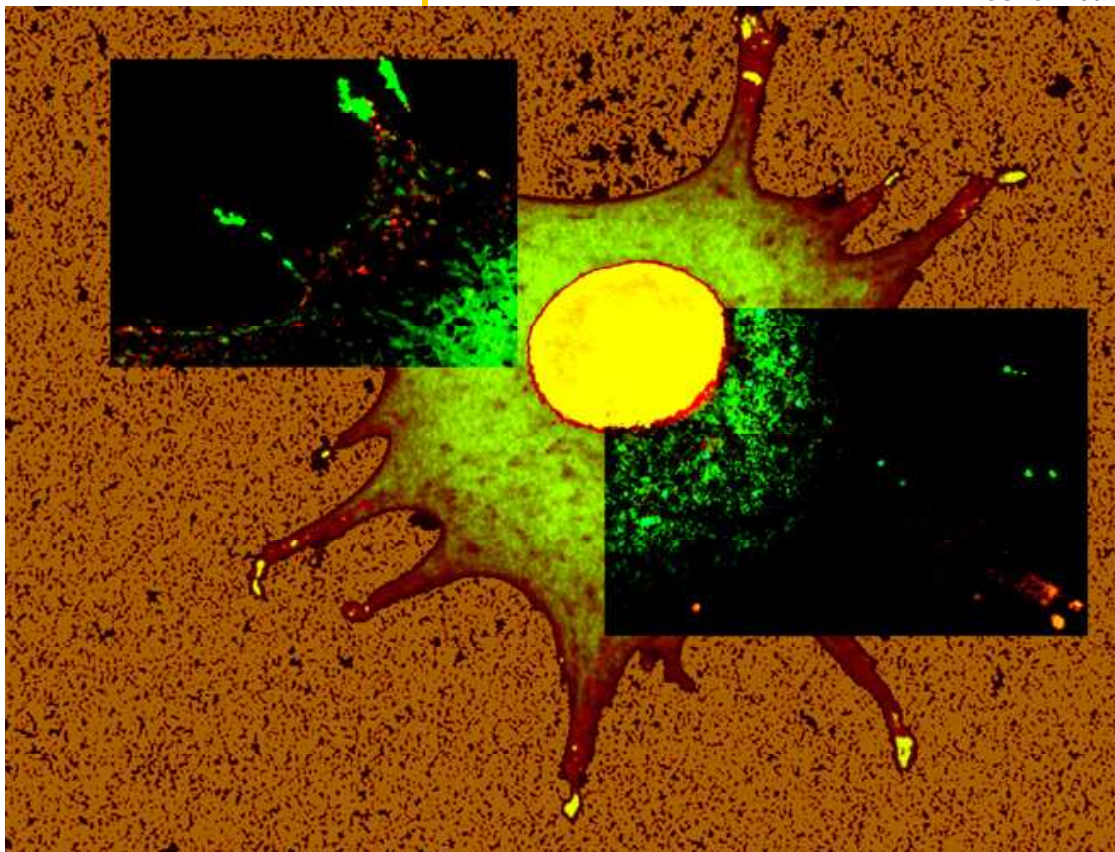


Generalitat de Catalunya
Departament d'Innovació,
Universitats i Empresa
**Comissionat per a Universitats
i Recerca**



Microsynth

**AHF analysentechnik AG
Carl Zeiss AG
Biochemical Journal**



Final Programme

Saturday 23 May

Late afternoon /
early evening

19.00

20.30

21.15

Registration at the ESF-RC desk

Dinner

Keynote Lecture : Yuh Nung Jan

HHMI, UCSF, US

An exuberant example of cell polarity: How do axons and dendrites acquire their distinct properties

Welcome drink

Sunday 24 May

08.45-09.00

Conference Opening

Pilar Pérez

CSIC, ES

Presentation of ESF

Session 1:

Chair: Claudia Stürmer, University of Konstanz, DE

09.00-09.35

Kai Simons

Max-Planck-Institute of Molecular Cell Biology and Genetics, DE

Lipid rafts and membrane trafficking

09.40-10.15

Philippe Chavrier

Institut Curie - CNRS UMR144, FR

Mechanism of invadopodia formation by tumor cells

10.20-10.40

Coffee break

10.45-11.20

Catherine Rabouille

UMC Utrecht, NL

Unconventional secretion to the basal side of epithelial cells

11.25-12.00

Anne Spang

Biozentrum University of Basel, CH

SAND-1 is the critical switch for early-to-late endosome transition

12.05-12.25

George Banting – Short Talk

Bristol University, UK

A CD317(tetherin)/RICH2 complex plays a critical role in the organisation of the sub-apical actin cytoskeleton in polarised epithelial cells

12.30

Lunch

15.00-16.00

Poster session and Coffee

Session 2:

Chair: Rytis Prekeris, University of Colorado Denver, US

16.00-16.35

Michel Labouesse

Université Louis Pasteur – IGBMC, FR

Junction remodelling during C. elegans embryonic morphogenesis

16.40-17.15

Pilar Perez

CSIC, ES

Fission yeast Cdc42 links cytoskeleton assembly and secretion to generate polarized growth

17.20-17.17.55

Patrick Brennwald

UNC, US

Rho GTPase Regulation of Cell Polarity and Exocytosis

18.00-18.20

Aniko Keller-Pinter – Short Talk

University of Szeged, HU

Syndecan-4 regulates the Rac1 activity and influences the localization of Par6 subsequently mediating epithelial-mesenchymal transition

18.25-18.45

Mary Munson - Short Talk

University of Massachusetts Medical School, US

Sec6p anchors the assembled exocyst complex at sites of secretion

19.00

Dinner

20.30-22.00

Poster Session: Drinks Sponsored by 

Monday 25 May

Session 3

Chair: Pierre Courtoy, University of Louvain Medical School, BE

09.00-09.35

Julie Ahringer - Biochemical J. lecture

University of Cambridge, UK

Cell Polarity in C. elegans embryos

09.40-10.15

David Bilder

University of California, Berkeley, US

Endocytosis, polarity, and Delta/Notch signaling

10.20-10.40

Coffee break

10.45-11.20

Daniel St. Johnston

University of Cambridge, UK

Making the apical-lateral boundary in epithelia

11.25-12.00

Anne Ephrussi

European Molecular Biology Laboratory (EMBL), DE

Visualizing oskar RNP assembly for polarized transport in the Drosophila Oocyte

12.05-12.25

Elizabeth Gavis – Short Talk

Princeton University, US

Visualizing mRNA transport pathways

12.30

Lunch

15.00-16.00

Poster Session and Coffee

Session 4

Chair: Dirk Niessing, Helmholtz-Zentrum München, DE

16.00-16.35

Ernst Stelzer

European Molecular Biology Laboratory (EMBL), DE
Light sheet based fluorescence microscopes (LSFM, SPIM, DSLM) reduce phototoxic effects by several orders of magnitude

16.40-17.15

Hans Meinhardt

Max Planck Institute for Developmental Biology, DE
Models for the generation of highly dynamic intracellular patterns

17.20-17.55

Matthias Weiss

German Cancer Research Center (DKFZ), DE
Combining microscopy and simulations to elucidate generic aspects of membrane traffic

18.00-18.20

Katrin Willig – Short Talk

Max-Planck-Institute for Biophysical Chemistry, DE
STED nanoscopy in living cells using live cell compatible markers

18.25-18.45

Stefanie Redemann – Short Talk

Max Planck Institute for Molecular Cell Biology and Genetics, DE
Membrane invaginations reveal sites of force generation in C.elegans embryos

19.00

Dinner

20.00-22.00

Poster Session: Drinks Sponsored by 

Tuesday 26 May

Session 5

Chair: Hay-Oak Park, Ohio State University, US

09.00-09.35

Peter Devreotes

John Hopkins University, US
Signaling Networks for Chemotaxis

09.40-10.15

Gaudenz Danuser; Roche Lecture

The Scripps Research Institute, US
Dynamic interactions of actin cortex and endocytosis

10.20-10.40

Coffee break

10.45-11.20

Jürgen Knoblich

Institute of Molecular Biotechnology (IMBA), AT
Asymmetric cell division and proliferation control in the Drosophila and mouse nervous system

11.25-12.00

Edwin Munro

University of Washington, US
Intertwined mechanical and biochemical feedback loops control polarity establishment and maintenance in C. elegans

12.05-12.25

Hernan Lopez-Schier – Short Talk

Centre for Genomic Regulation, ES

Afferent Neurons of the Zebrafish Lateral Line Are Strict Selectors of Hair-Cell Orientation

12.30

Lunch

14.00

Half-day excursion to Girona

19.00

Dinner

20.00-21.00

Forward Look Plenary Discussion

Wednesday 27 May

Session 6

Chair: Maria Montoya, Centro Nacional de Investigaciones Cardiovasculares, ES

09.00-09.35

Yohanns Bellaiche ; EMBO YIP lecture

Institut Curie, FR

E-Cadherin trafficking in Drosophila epithelial cells

09.40-10.15

Keith Mostov

University of California, US

Morphogenesis of multicellular epithelial structures

10.20-10.40

Coffee break

10.45-11.20

Kozo Kaibuchi

Nagoya University, JP

Axon formation and polarized vesicle transport

11.25-12.00

Ian Macara

University of Virginia, US

Par Proteins, Polarity and Morphogenesis

12.05-12.25

Clark Wells – Short Talk

University of Indiana , US

The Adaptor Protein Amot Mediates the loss of Apical Polarity by directly tethering Apical Polarity proteins to Trafficking Pathways

12.30

Lunch

14.45-15.15

Coffee break

Session 7

Chair: Sven van Ijzendoorn, University of Groningen, NL

15.20-15.55

François Schweisguth

Institut Pasteur, FR

Regulation of the trafficking and signaling activity of Notch ligands in Drosophila

16.00-16.35

Thomas Lecuit

Université de la Méditerranée, FR

From cell mechanics to tissue morphogenesis

16.40-17.15	<p>Enrique Rodriguez-Boulan Cornell University, US <i>To AP1B or not to AP1B: the natural story of a Polarity Adaptor</i></p>
17.20-17.40	<p>Rytis Prekeris – Short Talk University of Colorado Denver, US <i>Rip11/FIP5 and Rab11 Binding to Sorting Nexin 18 Regulates Apical Endocytic Protein Transport in Polarized Epithelial cells</i></p>
17.45-18.05	<p>Claire Hivroz – Short Talk Institut Curie, FR <i>Cdc42-dependent remodeling of the cytoskeleton at the immune synapse is required for interferon-gamma secretion</i></p>
18.10-18.30	<p>Sander van den Heuvel – Short Talk Utrecht University, NL <i>Control of Symmetric versus Asymmetric Cell Division in a C. elegans Epithelium</i></p>
18.35-18.55	<p>Jordi Casanova – Short Talk Institut de Biologia Molecular de Barcelona (CSIC) / IRB, ES Cell <i>Adhesion and Cytoskeleton Organization in Tracheal Morphogenesis</i></p>
19.20	Before Dinner Cocktail (Dali Bar)
20.00	Conference Dinner (Salon Goya)

Thursday 28 May

Breakfast & Departure

Abstracts, Posters & Short Oral Presentations

There will be no short talks other than those listed on this Final Programme.

All accepted posters are listed on the Poster List.

Recommended poster size is 140 cm high x 100 cm wide. Use letters and drawings that can be read from approximately 100 cm distance.

IMPORTANT

The posters are divided into two separate sessions

Please consult the Poster List for more details

Poster prizes sponsored by **EMBO, Trends in Cell Biology Journal and Nature Cell Biology Journal** will be awarded at the end of the conference.