

ESF Summer School

Nanomedicine 2011

LEUCOREA and Luther-Hotel, Lutherstadt Wittenberg, Germany
19-24 June 2011

With support from



MARTIN-LUTHER-UNIVERSITÄT
HALLE-WITTENBERG

Background:

The ESF Forward Look Report on Nanomedicine recommended the need to establish Pan-European interdisciplinary Research and Training Conferences covering the broad field of Nanomedicine (2005; www.esf.org). The first highly successful ESF Research Conference on Nanomedicine was held at Sant Feliu de Guixols, Spain, 2006. This was followed by the 1st and 2nd ESF Summer Schools in Nanomedicine which took place in Cardiff, UK (2007) and Lisbon, Portugal (2009). The Summer School is a biennial event to be held at different locations throughout Europe and in 2011 it will be hosted by the University of Halle-Wittenberg.

Aims and purpose:

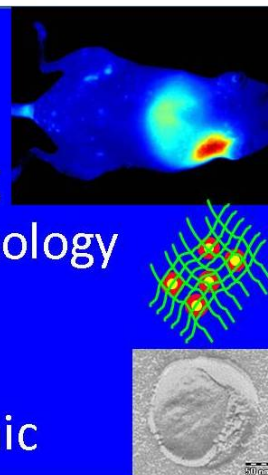
The ESF Summer School has been designed to provide an intensive state-of-the-art training across all of the sub-disciplines of Nanomedicine, and to foster discussion and exchange of ideas in a relaxed atmosphere. The lectures, tutorials and interactive workshops will particularly cover all aspects that are needed to transfer new nanotechnologies from bench to bedside – from materials science and engineering to clinical need, from rational design of nanopharmaceuticals, imaging agents and constructs for tissue engineering to safe and practical development. The programme will be structured to allow free time in the afternoon for informal networking and small group tutorials with timetabled events in the morning, late afternoon and evening. Posters will be mounted throughout the meeting.

How to participate:

The Summer School programme will cover Nanomedicine at a level that will be accessible to participants with diverse backgrounds – including Chemistry, Physics, Engineering, Biology, Pharmaceutical Sciences, Medicine, and Ethics. The course will be specifically tailored to early career researchers (PhD students, Post-docs), medical doctors and industrialists entering this emerging field. Participation is possible only after successful application. Support grants will be available for early-stage researchers to cover the course fee and possibly part of the travel costs. Grants are distributed based on financial need and scientific merit. Grantees must attend the entire duration of the course in order to benefit from the grant.

Nanomedicine

- Materials
- Methods
- Modelling
- Nanotoxicology
- Ethics
- Imaging
- Lab to clinic



Organising Committee: **Karsten Mäder**, MLU Halle-Wittenberg, DE; **Heidi Foth**, MLU Halle-Wittenberg, DE; **Rogério Gaspar**, University of Lisbon, PT; **Charlotte Kloft**, MLU Halle-Wittenberg, DE & **Maria J. Vicent**, CIPF Valencia, ES

Invited Speakers will include:

- **Rainer Alex**, F. Hoffmann La Roche Ltd., CH
- **Andreas Briel**, nanoPET Pharma GmbH, DE
- **Tomas Etrych**, Institute of Macromolecular Chemistry, CZ
- **Heidi Foth**, Martin-Luther-Universität Halle-Wittenberg, DE
- **Rogério Gaspar**, Universidade de Lisboa, PT
- **Hamid Ghandehari**, Nano Institute of Utah University, US
- **Arwyn Tomos Jones**, Cardiff University, UK
- **Thomas Kissel**, Philips University Marburg, DE
- **Charlotte Kloft**, Martin-Luther-Universität Halle-Wittenberg, DE
- **Karsten Mäder**, Martin-Luther-Universität Halle-Wittenberg, DE
- **Dusica Maysinger**, McGill University, CA
- **Rolf Nitzsche**, Malvern Instruments GmbH, DE
- **Alfred Nordmann**, Technische Universität Darmstadt, DE
- **Hans Oberleithner**, Westfälische Wilhelms-Universität Münster, DE
- **Molly Stevens**, Imperial College of London, UK
- **Gert Storm**, University of Utrecht, NL
- **Maria Vicent**, Prince Felipe Research Centre, ES

Application form & programme available from

www.esf.org/conferences/11367

Closing date for applications: 19 March 2011

European Science Foundation | Research Conferences Unit
149 avenue Louise | Box 14 | Tour Generali, 15th Floor | Brussels | Belgium
Tel: +32 (0)2 533 2020 | Fax: +32 (0)2 538 8486
Email: conferences@esf.org | www.esf.org/conferences