



**Standing Committee for the
Humanities** *Strategic Workshop*

*Research Communities and Research
Infrastructures in the Humanities
Strasbourg, 28 October 2010*

Dr. Arianna Ciula & Prof. Claudine Moulin

Standing Committee for the Humanities (SCH)

- SCH as part of ESF Scientific Governance: ~35 Members + 5 Observers; scope defined by traditional disciplines and related methodologies, broad fields of study, trans-disciplinary research areas
- **Research Infrastructures** as current strategic priority
 - SCH Expert Group on RIs (established in 2009)
 - Members: Maria Ågren (SE), Andrea Bozzi (IT), Margaret Kelleher (IE), Kristin Kuutma (EE), Claudine Moulin (chair, LU), Marko Tadic (HR)
 - Aim: propose pro-active strategies for RIs in the Humanities (European level but global link)
 - Principles: Human factor (use and research communities); Intellectual vs. technical perspective
 - Actions:
 - Ongoing work on science policy publication
 - Present Strategic Workshop on *Research communities and research infrastructures*
 - Ongoing liaison with ESF MO forum on RIs and MERIL project
 - Future joint initiatives beyond humanities and beyond Europe

TOPICS

SCH Science Policy Publication on RIs

- Bridge traditional RIs in the humanities with digital RIs
- Research input and engagement of researchers in producing RIs
- Definition/taxonomy/typology of RIs
- Best practices and awareness
- Wide access and national languages
- Evaluation of alternative research outputs (e.g. Digital publications, scholarly-driven digital resources)
- Training
- Priorities

Support to young researchers to be dealt with across sections

Strategic Workshop Aims

- Gather different **research communities' perspectives** on scholarly-driven design and use of RIs in the humanities
- Attract contributions from European scholars across a wide range of **disciplines** representing different **research languages** and **interests** over RIs related issues
- Inform the SCH Working Group's preparation of an ESF **science policy publication** on RIs in the humanities

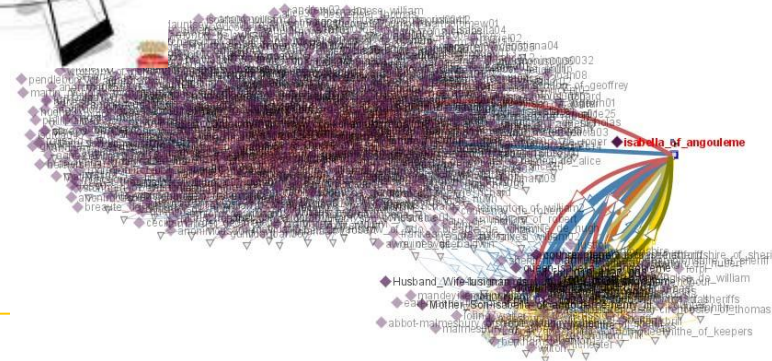
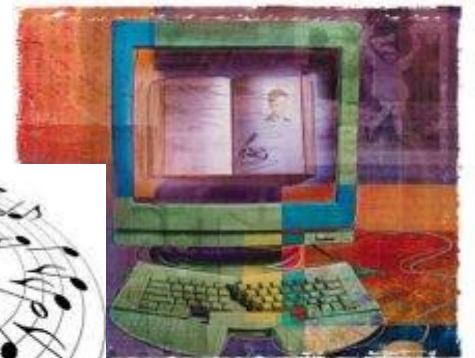


Themes and Structure



1. Research communities and adoption of research infrastructures
2. Re-purposing and re-use of data
3. Text vs. non text
4. Disciplinary vs. interdisciplinary resources
5. Integrating extant resources

- Each session: **15 minutes** presentations followed by facilitated **discussion**
- Document on **thematic focus** as reference for the discussion



Thank you!

Dr. Arianna Ciula & Prof. Claudine Moulin

Science Officer , Humanities unit – SCH member (LU)

aciula@esf.org

European Science Foundation
Humanities and Social Sciences Unit
1, quai Lezay-Marnésia, 67080 Strasbourg Cedex, FRANCE
<http://www.esf.org/>