

WORKSHOPS ON MARINE RESEARCH  
DRILLING – MAGELLAN WORKSHOP SERIES (Magellan)

Standing Committee for Life,  
Earth and Environmental Sciences (LESC)



---

The European Science Foundation (ESF) was established in 1974 to create a common European platform for cross-border cooperation in all aspects of scientific research.

With its emphasis on a multidisciplinary and pan-European approach, the Foundation provides the leadership necessary to open new frontiers in European science.

Its activities include providing science policy advice (Science Strategy); stimulating co-operation between researchers and organisations to explore new directions (Science Synergy); and the administration of externally funded programmes (Science Management). These take place in the following areas: Physical and engineering sciences; Medical sciences; Life, earth and environmental sciences; Humanities; Social sciences; Polar; Marine; Space; Radio astronomy frequencies; Nuclear physics.

Headquartered in Strasbourg with offices in Brussels, the ESF's membership comprises 75 national funding agencies, research performing agencies and academies from 30 European nations.

The Foundation's independence allows the ESF to objectively represent the priorities of all these members.

# Introduction

---

Over the last decennia European researchers played a leading role in the international marine research drilling community which has made major contributions to important discoveries and scientific advances such as: the operation of plate tectonics and the accretion of the oceanic lithosphere, the existence of microbial communities (deep biosphere) and the presence of frozen methane (gas hydrates) below the sea floor, past extreme and rapid climate variations, high resolution climate perturbations, new models for passive margin evolution and alpine geology, the mechanisms for biogeochemical cycles, and the discovery of large igneous provinces associated with continental break-up at volcanic margins.

The ESF Magellan Workshop Series Programme was an initiative by the European Consortium for Ocean Research Drilling (ECORD), the European partner of the International Ocean Drilling Program (IODP) and designed as a mechanism to stimulate and nurture the process of developing new and innovative science proposals to support European leadership in the planning of new marine drilling expeditions and execute European proposals for drilling platforms and hence ensure the effective exploitation of research opportunities.

The running period of the ESF MAGELLAN Research Networking Programme is for five years from February 2006 to February 2010.

Drilling barge GLAD 800  
*(photo courtesy of IODP)*

---



# Magellan Workshop Activities

---

The programme supports workshops, summer and winter schools as well as short visit grants. Funding will be provided for three to four marine research drilling workshops per year.

## Calls for workshop proposals

The Magellan Steering Committee launches two calls for workshops per year: in the fall and in the spring. Calls for proposals will be open from March 15 to May 15 and from September 15 to November 15. The award announcements will be made following peer-reviewing on June 15 and December 15. Depending on the submission date, the selected workshops will be held in the following spring or fall. Applications for workshops are submitted to ESF online ([www.esf.org/magellan](http://www.esf.org/magellan)) using the relevant science meeting application form and are automatically forwarded to the Chair of the Steering Committee Dr. Jeroen Kenter for distribution.

## Short visit grants

A limited number of grants will be made available each year to fund short visit grants. Applications are made online and should include the following information:

- A short description of the proposed project (about 250 words) and the aim of the visit
- A curriculum vitae of a maximum of two A4 pages
- Full address details of the prospective host(s)
- Proposed starting date
- Estimated travel costs

Priority will be given to applicants who come from countries that financially support the Magellan Programme (Austria, Belgium, Denmark, Finland, France, Germany, Ireland, the Netherlands, Norway, Portugal, Sweden and Switzerland).

## Workshop themes

Workshop topics for the Magellan Workshops Series Programme must broadly follow the general themes:

- *Earth's Surface Environmental Change, Processes and Effects*
- *The Deep Biosphere and Sub-Seafloor Ocean*
- *Solid Earth Cycles & Geodynamics*

Workshop proposals should include complete rationals for the workshop thus enabling execution of the workshop within four to five months following selection by the Steering Committee. It is expected that the workshop leadership and participation will have a significant European component. ESF funding is normally applied towards funding speakers from countries which support the Magellan Programme. The participation of young scientists is strongly encouraged.

ROV Genesis

(photo courtesy RCMG, Ghent University)



# Evaluation and Execution

---

## Proposal evaluation

Proposal evaluation is based on scientific merit. Nonetheless priority will be given to proposals in which applicants come from, or intend to visit countries that financially support the ESF Magellan Programme (Austria, Belgium, Denmark, Finland, France, Germany, Ireland, the Netherlands, Norway, Portugal, Sweden and Switzerland). Furthermore, junior applicants with little or no experience in writing a proposal are strongly recommended to ask advice from their senior local and/or host supervisor.

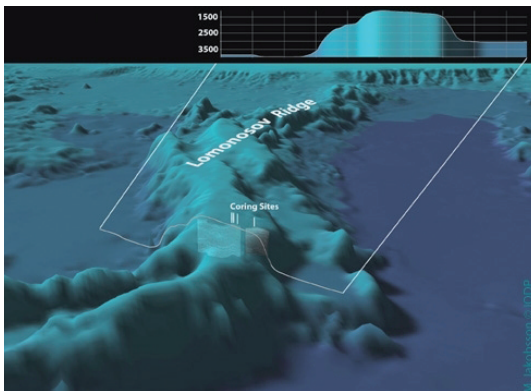
## Workshop duration

The workshop should last between two and four days and bring together between 20 - 35 participants. Workshops should be held close to a convenient air and/or train hub and utilise relatively low cost facilities.

## Contributions

Contributions to workshops will not exceed 20,000 Euros. Contributions to short visit grants will be made at rates not to exceed 500 Euros for travel and a per diem of 85 Euros.

3D map of the coring sites  
at Lomonosov Ridge in 1124 meters water depth  
© European Communities, 1995-2006



# Award Procedures

---

Applicants will be notified by ESF within one month of the proposal deadline concerning the status of their proposals. Successful applicants will then be contacted by the Chairman of the Steering Committee, Dr. Jeroen Kenter, and the Science Coordinator, Dr. Teresa Bingham, in order to initiate budget negotiations. It is expected that the main science applicant will submit a detailed workshop budget and be able to justify all costs. The ESF Guidelines for Scientific Meetings and Workshops must be followed (available online at [www.esf.org/magellan](http://www.esf.org/magellan)).

Drilling vessel R.V. JOIDES  
Resolution  
(photo courtesy of IODP)



## Workshop Outcomes

---

Organisers are required, via an online procedure, to provide ESF with a financial and scientific report which will be the basis of the workshop output evaluation. The scientific report, which should be uploaded by the organiser in .pdf or .doc format, should not exceed six pages. The report should include: a summary (limited to one page), a description of the scientific content and discussion at the event (up to 4 pages), an assessment of results and impact of the event on the future direction of the scientific field (limited to two pages). In addition, the final programme of the meeting including the full list of speakers and participants must be provided.

Shipboard sampling  
*(photo courtesy of IODP)*



## Funding

---

ESF Research Networking Programmes are principally funded by the Foundation's Member Organisations on an à la carte basis. Magellan is supported by:

- Fonds zur Förderung der wissenschaftlichen Forschung (FWF)  
*Austrian Science Fund, Austria*
- Fonds voor Wetenschappelijk Onderzoek (FWO)  
*Fund for Scientific Research – Flanders, Belgium*
- Forskningsrådet for Natur og Univers (FNU)  
*Natural Science Research Council, Denmark*
- Suomen Akatemia/Finlands Akademi (AKA) –  
*Academy of Finland – Research Council for Natural Sciences and Engineering, Finland*
- Centre National de la Recherche Scientifique (CNRS)  
*National Centre for Scientific Research, France*
- Deutsche Forschungsgemeinschaft (DFG)  
*German Research Foundation, Germany*
- Geological Survey of Ireland (GSI), Ireland
- Nederlandse Organisatie voor Wetenschappelijk Onderzoek (NWO)  
*Netherlands Organisation for Scientific Research, Netherlands*
- Norges Forskningsråd (NFR)  
*Research Council of Norway, Norway*
- Fundação para a Ciência e a Tecnologia (FCT)  
*Foundation for Science and Technology, Portugal*
- Vetenskapsrådet (VR)  
*Swedish Research Council, Sweden*
- Schweizerischer Nationalfonds (SNF)  
*Swiss National Science Foundation, Switzerland*

# Magellan Steering Committee

---

**Dr. Jeroen Kenter (Chair)**

Chevron Energy Technology Company  
Appelgaarde 4  
2272 TK Voorburg (The Hague)  
Netherlands  
Email: jeroenkenter@chevron.com

**Dr. Jochen Erbacher (Vice-Chair)**

Marine Geology and Deep Sea Mining  
Bundesanstalt für Geowissenschaft.  
und Rohstoffe  
Stilleweg 2  
30655 Hannover  
Germany  
Email: J.erbacher@bgr.de

**Dr. Fatima Abrantes**

Inst. Nacional de Engenharia  
Technol. e Inovacao  
Estrada da Portela, Zambujal  
Apartado 7586  
2721 - 866 Amadora  
Portugal  
Email: fatima.abrantes@ineti.pt

**Dr. Eve Arnold**

Department of Geology and  
Geochemistry  
University of Stockholm  
10691 Stockholm  
Sweden  
Email: emarnold@geo.su.se

**Dr. Gilbert Camoin**

CEREGE, UMR CNRS 6635  
Europôle Méditerranéen de l'Arbois  
BP 80  
13545 Aix-en-Provence cedex 4  
France  
Email: gcamoin@arbois.cerege.fr

**Dr. Eibhlin Doyle**

Marine Geology and Geophysics  
Geological Survey of Ireland  
Beggars Bush  
Haddington Road  
Dublin 4  
Ireland  
Email: eibhlin.doyle@gsi.ie

**Dr. Jean-Pierre Henriët**

Renard Centre of Marine Geology  
Universiteit Gent  
Krijgslaan 281  
9000 Gent  
Belgium  
Email: jeanpierre.henriet@ugent.be

**Dr. Paul Martin Holm**

Geological Institute  
Oester Voldgade 10  
1350 Copenhagen  
Denmark  
Email: paulmh@geol.ku.dk

**Dr. Judith A. McKenzie**

Geologisches Institut  
Department Erdwissenschaften  
ETH-Zentrum  
Universitätstr. 16  
CHN H 70.3  
8092 Zürich  
Switzerland  
Email: judy.mckenzie@erdw.ethz.ch

**Dr. Rolf Birger Pedersen**

Geological Institute  
University of Bergen  
Allegaten 41  
5007 Bergen  
Norway  
Email: rolf.pedersen@geo.uib.no

**Dr. Werner Piller**

Institute of Earth Sciences  
(Geology and Palaeontology)  
University of Graz  
Heinrichstrasse 26  
8010 Graz  
Austria  
Email: werner.piller@uni-graz.at

**Dr. Kari Strand**

Thule Institute  
University of Oulu  
PO Box 7300  
90014 Oulu  
Finland  
Email: kari.strand@oulu.fi

**Science Coordinator****Dr. Teresa Bingham Müller**

CAB E74  
D-ERDW ETHZ  
8092 Zurich  
Switzerland  
Tel: +41 44 632 6483  
Fax: +41 44 632 10 30  
Email: bingham@erdw.ethz.ch

---

**ESF Liaison****Dr. Bernard Avril**

*Science*

Life, Earth and Environmental  
Sciences Unit (LESC)  
European Science Foundation  
1 quai Lezay-Marnésia  
BP 90015  
67080 Strasbourg cedex  
France  
Tel: +33 (0)3 88 76 21 84  
Fax: +33 (0)3 88 37 05 32  
Email: magellan@esf.org

For the latest information on this  
Research Networking Programme  
consult the Magellan website:  
[www.esf.org/magellan](http://www.esf.org/magellan)

