

RESEARCH CONFERENCES

ESF-COST High-Level Research Conference

Extreme Environmental Events

Selwyn College - Cambridge, United Kingdom

13-17 December 2010

Chair: Dr. Andrew Parnell, School of Mathematical Sciences,
University College Dublin, IE

Understanding the frequency and magnitude of extreme environmental events and their impacts is a critical aspect of climate prediction. This conference aims to bring together an inter-disciplinary group including statisticians, climate modellers, meteorologists, and other environmental scientists to focus on extreme events and the uncertainties inherent in their understanding.

Sessions will focus on:

Theme 1: Extreme events and statistical methodology

Questions:

How do statisticians define an event?
What makes it an extreme event?
What statistical methods are used in extreme event identification?
What is the difference between long-term mean changes and extremes of a distribution?
What is the current state of the art in extremes methodology?
What common mistakes are made in dealing with extreme events?

Theme 2: Modelling of extreme environmental events

Questions:

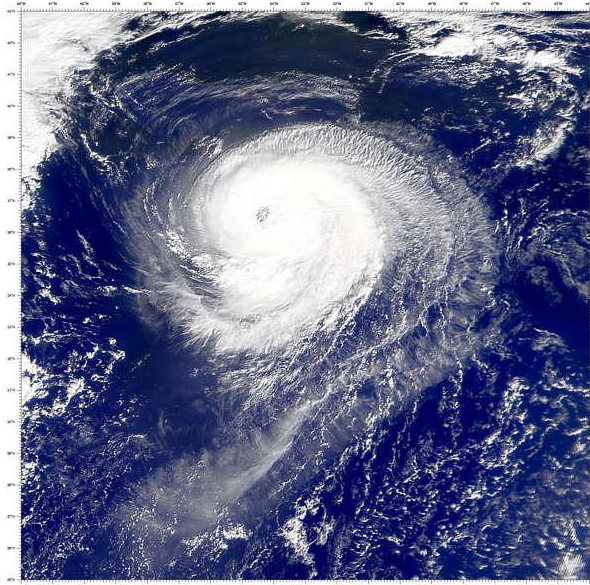
How do climate models deal with extreme events?
How might extreme events be better incorporated into extreme events?
What do models of extreme events currently predict?
How are these predictions validated?
What research/experiments are required to improve predictions?
What past extremes do we know about?

Theme 3: Impacts of extreme events

Questions:

What are the potential impacts of extreme events on ecosystems, plants, forests, animals and micro-organisms?
How might extreme events affect the migrations of animals?
How do ecosystems cope with mean extremes versus extremes of distribution?

The conference will feature lectures by invited high-level speakers, short talks by young and early stage researchers, poster sessions and open discussion periods as well as a forward look panel discussion about future developments.



Invited Speakers will include:

Carl Beierkuhnlein - University of Bayreuth, Germany

Martin Beniston - University of Geneva, CH

Hans De Boeck - University of Antwerp, Belgium

Chris Ferro - University of Exeter, UK

Petra Friederichs - University of Bonn, DE

Gabi Hegerl - University of Edinburgh, UK

Anke Jentsche - Helmholtz Centre for Environmental Research, DE

Philippe Naveau - IPSL-CNRS, France

Francis Zwiers - Canadian Centre for Climate Modelling and Analysis, CA

Application form & programme available from

www.esf.org/conferences/10345

Closing date for applications 28 September 2010

European Science Foundation | Research Conferences Unit
149 avenue Louise | Box 14 | Tour Generali, 15th Floor | Brussels | Belgium
Tel: + 32 (0)2 533 2020 | Fax: +32 (0)2 538 8486
Email: conferences@esf.org | www.esf.org/conferences